

3-6-2023

## VI.iii; 35-03 NASW - MI 2012 Conference Presentation Acceptance Email

Betty L. Brown-Chappell PhD  
*Eastern Michigan University*

Follow this and additional works at: <https://commons.emich.edu/bbc-research>

---

### Recommended Citation

Betty Brown-Chappell papers, 010.BBC. Eastern Michigan University Archives

This Archival Materials is brought to you for free and open access by the Betty Brown-Chappell Collection at DigitalCommons@EMU. It has been accepted for inclusion in Research & Scholarship by an authorized administrator of DigitalCommons@EMU. For more information, please contact [lib-ir@emich.edu](mailto:lib-ir@emich.edu).

# NASW Michigan Chapter

Community Organizing

In

## 2012 Annual Meeting

South Haven, MI

With a Diverse Group

Betty Brown-Chappell, PhD, LMSW

Professor  
Kalamazoo, MI  
Eastern Michigan University

---

---

---

---

---

---

---

---

### Purpose

How did a diverse group of citizens in a small city use social advocacy to effectively organize?



---

---

---

---

---

---

---

---

October 2009



*Hello, Betty?  
I want to run!*



---

---

---

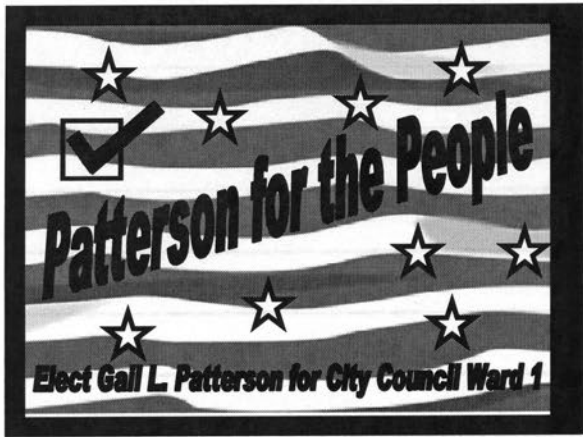
---

---

---

---

---




---

---

---

---

---

---

---

---

### Sheros

- Mary Ann Mahaffey: "What are they doing for people who don't have anything?"



- Erma Henderson: "The matriarch for women in elected office."




---

---

---

---

---

---

---

---

### Ward 1 Community Action Committee

- Based on Henderson and Mahaffey Models
- Empowerment in underserved community
- Community organizing – locality development requires holistic approach

---

---

---

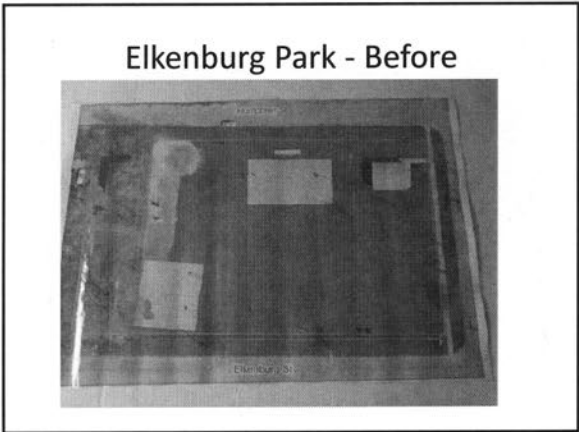
---

---

---

---

---



---

---

---

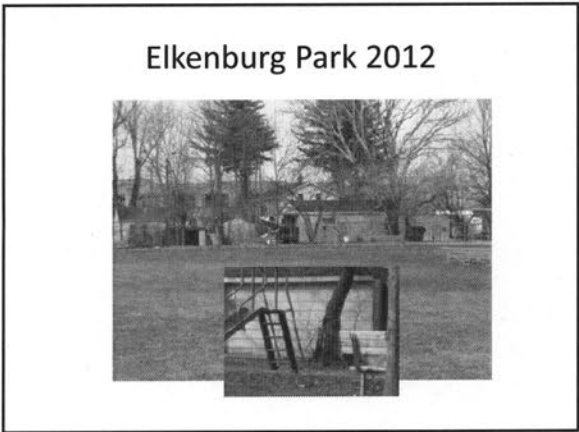
---

---

---

---

---



---

---

---

---

---

---

---

---

- Response: Gail L. Patterson, South Haven Council Woman, & Members of Ward 1 CAC
- Questions & Answers
- Thank You!

---

---

---

---

---

---

---

---

# NASW Michigan Chapter

Community Organizing

In

## 2012 Annual Meeting

South Haven, MI

With a Diverse Group

Betty Brown-Chappell, PhD, LMSW

Professor  
Kalamazoo, MI  
Eastern Michigan University

---

---

---

---

---

---

---

---

### Purpose

How did a diverse group of citizens in a small city use social advocacy to effectively organize?



---

---

---

---

---

---

---

---

October 2009



*Hello, Betty?  
I want to run!*



---

---

---

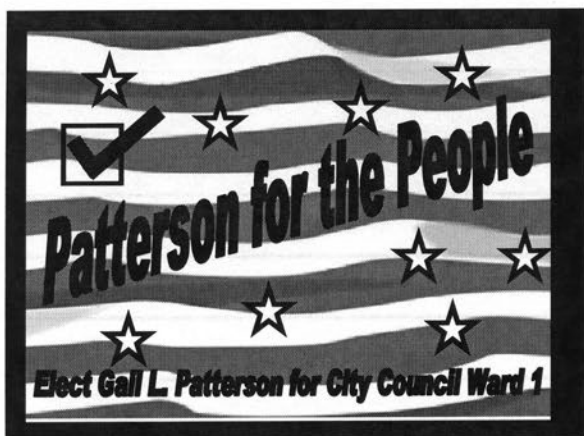
---

---

---

---

---



---

---

---

---

---

---

---

---

### Sheros

- Mary Ann Mahaffey: "What are they doing for people who don't have anything?"



- Erma Henderson: "The matriarch for women in elected office."



---

---

---

---

---

---

---

---

### Ward 1 Community Action Committee

- Based on Henderson and Mahaffey Models
- Empowerment in underserved community
- Community organizing – locality development requires holistic approach

---

---

---

---

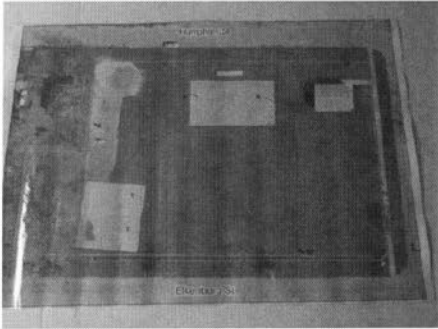
---

---

---

---

Elkenburg Park - Before



---

---

---

---

---

---

---

---

Elkenburg Park 2012



---

---

---

---

---

---

---

---

- Response: Gail L. Patterson, South Haven Council Woman, & Members of Ward 1 CAC
- Questions & Answers
- Thank You!

---

---

---

---

---

---

---

---

Eaglemail

bbrownch@emich.edu

± Font Size ±

---

## 2012 NASW-Michigan Annual Conference

---

Tue, Jan 10, 2012 12:32 PM



Dear Betty,

Thank you for your proposal submission and patience during our selection process. On behalf of the Conference Taskforce, I am pleased to inform you that your workshop, "*Community Organizing in South Haven, MI with a Diverse Group*", has been selected for the 2012 NASW-Michigan Annual Conference.

We would like you to present on **Thursday, April 19** from **10:30am-12:00pm**.

**Please confirm your ability to present during this time within 48 hours.**

Some additional important items to know regarding the Annual Conference:

- If your workshop has more than one presenter, please distribute this email to them as we only use one contact person for each workshop.
- If you would like to attend the conference, the Presenter rate is \$75 per day. There will be only one discount offered per presentation - please work out who in your group will use your discount.
- Powerpoint presentations are to be sent to Tricia McCarthy ([tmmcarthy@nasw-michigan.org](mailto:tmmcarthy@nasw-michigan.org)) by Tuesday, March 15th.

If you have any questions, please feel free to contact me or Tricia at any time.

Sincerely,

Vince Coraci, LMSW  
Director of Member Services & Development  
NASW-Michigan Chapter  
517-487-1548, ext. 15  
**Join NASW-Michigan on [Facebook!](#)**