

1992

Alumni Action News: The National Edition, October 1992

Eastern Michigan University

Follow this and additional works at: http://commons.emich.edu/alumni_news

Recommended Citation

Eastern Michigan University, "Alumni Action News: The National Edition, October 1992" (1992). *Alumni News*. 147.
http://commons.emich.edu/alumni_news/147

This Article is brought to you for free and open access by the University Archives at DigitalCommons@EMU. It has been accepted for inclusion in Alumni News by an authorized administrator of DigitalCommons@EMU. For more information, please contact lib-ir@emich.edu.

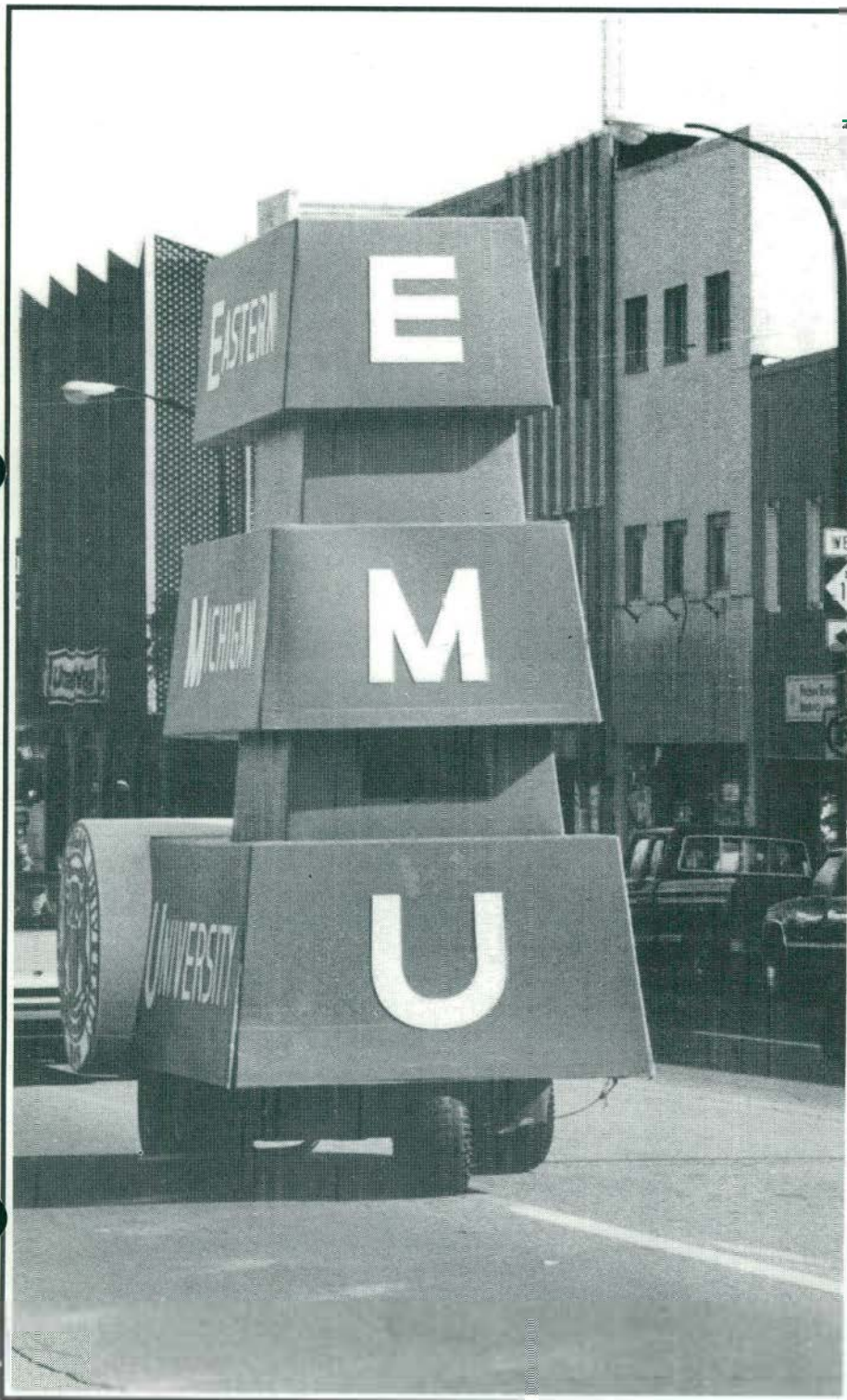
THE NATIONAL EDITION

Alumni Action

AN EASTERN MICHIGAN UNIVERSITY

NEWS

ALUMNI ASSOCIATION PUBLICATION



A Program of Eastern Michigan University
Alumni Association

Alumni Action
NEWS

IS JOINING FORCES WITH

EASTERN
MICHIGAN
Alumni

NEWSLETTER OF THE HURON VALLEY CHAPTER
OF THE EMU ALUMNI ASSOCIATION

LOCAL EDITION

The RESULT

SOMETHING NEW
is coming
DECEMBER 1
to a
MAILBOX NEAR YOU

- Alumni News
- Chapter News
- University News
- Collegiate News
- The Arts
- Athletics
- Music
- Theatre
- and MORE !

In the NEW
NATIONAL EDITION

Occupational Therapy Program Celebrates 50 Years at Eastern Michigan University

Eastern Michigan University recently celebrated the 50th anniversary of its occupational therapy program with a two day event held at EMU's Corporate Education Center and the Radisson on the Lake Resort.

The keynote address for the gala was delivered by EMU alumna Carole Hays.

An occupational therapy open house and concurrent sharing sessions were held during the first afternoon with participants including Dr. Lyla Spelbring and Frances Herrick Swailes, professors emeriti of the occupational therapy program; 1944 graduate Antje Price; 1981 alumnus Brian Gibbs; and 1922 graduate Lisa Brian.

Also participating were Ben Atchison, EMU instructor, and Joseph Wanchick.

EMU's occupational therapy program is one of three programs in EMU's Department of Associated Health Professions in the College of Health and Human Services.

Dr. Elizabeth King is dean of the College.

At the undergraduate level, the program admits 50 new students each fall and each winter. The professional curriculum includes four semesters of class and laboratory work and a six-month, full-time field placement. Graduates of the program have an exceptional scoring rate on the professional certification exam, with scores averaging from 92 to 100 percent.

The master's program is nearly three years old and provides a post-professional degree for certified occupational therapists. The curriculum includes 15 hours of occupational therapy theory and research methods, 120 hours of research and statistics and 12 hours of cognates. Dr. Ruth Hansen, associate professor, is program coordinator.

Coming Next Month to a Mailbox Near You the *EXPANDED* National Edition of *Alumni Action News*

Alumni Action News has been mailed on a monthly basis, for the past several years, to all dues paying members of the Eastern Michigan University Alumni Association, as well as all recent graduates of the University.

At the same time, Fountain Communications has been producing a monthly, 12-page *Local Edition* for members of the Huron Valley Chapter of the Alumni Association.

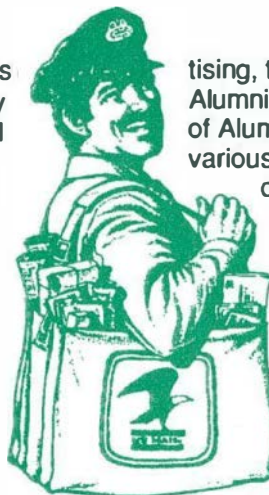
It has been the goal of the publishers, the Eastern Michigan University Alumni Association, to keep all interested alumni informed of what is happening at their institution.

Now we are pleased to announce that the *Local Edition* is combining with this publication and is going national.

What will that mean to you?

It means that monthly, throughout the academic year, you will be receiving at no cost to you a 24-page publication that will be jammed full of facts: facts about what alumni and friends are doing out in the wonderful world of work, as well as what is happening on campus.

This publication will be financed in part by display adver-



tising, the Eastern Michigan Alumni Association, the Office of Alumni Relations and various campus divisions and departments.

There will be lots of information each month about Eastern alumni.

In addition, for those who live in proximity to the University, there will be news of campus happenings in the areas of the arts, athletics, music and theatre that hopefully will attract you back for an afternoon or evening of outstanding entertainment.

There also will be specialized columns of interest about specific collegiate areas of the University.

News about alumni chapter activities will also be an important feature.

The first monthly issue of *The National Edition* will go into the mail, via third-class postage, on Nov. 15.

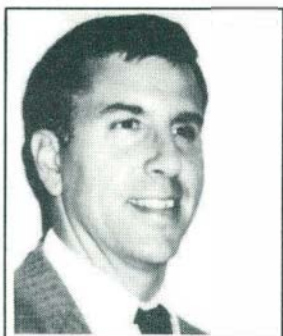
You should receive the magazine in a MAILBOX NEAR YOU no later than Dec. 1.

We hope that you will be as excited about this new product as we are. We invite your comments.

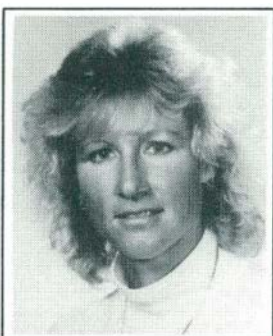
EMU Inducts Five Graduates Into Athletic Hall of Fame



Cleon Gilliam



Jay Jones



Sue Parks



Mike Strickland



Leo Turner

Five new members were formally inducted into the Eastern Michigan University Athletic Hall of Fame on Saturday, October 24. The new class of inductees was officially presented at a luncheon sponsored by the E Club at the Radisson on the Lake. Later that day, the inductees were introduced at halftime of the EMU-Ohio University football game.

The new members of the Hall of Fame include:

Cleon Gilliam — Gilliam, a 1955 graduate, was a standout baseball and basketball player at EMU. He earned second team All-interstate Intercollegiate Athletic Conference honors as a basketball player in 1952-53. He also led EMU in scoring the following season. Gilliam has coached and taught in the Detroit Public School system and has been the principal at Detroit's MacKenzie High School for the past six years.

Jay Jones — A 1983 graduate, Jones was a four-time Mid-American Conference swimming champion in the 200-yard butterfly and also earned one league title in the 200-yard individual medley. He also swam on four relay teams that captured MAC

crowns. The captain of the 1982-83 men's swimming team, Jay is the son of Mike Jones, long-time coach of EMU champions.

Sue Parks — Parks, one of the top competitive runners in the nation as a high school and college runner, set EMU records in every event from 880 yards to three miles during her undergraduate indoor and outdoor track career. A 1980 graduate, she won unofficial Mid-American Conference championships in 1976, 1977, and 1978. Since graduation, Sue has served as the women's head cross-country coach at the University of Michigan where she earned honors as the Big Ten "Cross-Country Coach of the Year" in 1986. Currently she is the assistant track coach of the men's and women's teams at the University of Arizona.

Mike Strickland — Strickland, a 1975 graduate, is considered by many to be the top running back in EMU grid history. The Detroit native led EMU in rushing for three seasons of varsity ball, finishing his career with 3,232 yards and 18 touchdowns. Following graduation, Strickland went on to star in the Canadian Football League for the Saskatchewan Rough Riders,

where he was named "Player of the Year" in 1976, West All-Star in 1976 and 1978, leading CFL rusher in 1978, and Molson's "Player of the Year" in 1979. He currently resides and works in Saskatchewan.

Leo Turner — Turner was a two-sport star at EMU excelling in both basketball and baseball. The 1950 graduate was the team captain in basketball and was the team's scoring and assist leader during the 1947-48 season. He went on to coach and teach and serve as athletic director at Melvindale High School for 36 years. He was inducted into the Michigan High School Coaches Hall of Fame in 1986 and is now in his 40th season as a high school football official.

EMU Hosts Textile Competition

The Michigan Surface Design Competitive Textile Show is being held now through Friday, Nov. 20, in EMU's Ford Gallery.

The exhibit includes works by 21 Michigan artists and is juried by Penny McMorris, consultant for the largest privately-owned quilt collection in the United States and curator of Owens-Corning Fiberglass Corporation's private

contemporary art collection. McMorris has a master's degree in art history, and is currently the host of the PBS series, "The Great American Quilt." She is also the author of the book, *Crazy Quilts*.

Ford Gallery is open Monday through Friday from 9 a.m. to 5 p.m.

For more information call Exhibit Coordinator Pat Williams or Gallery Director Gretchen Otto at 487-3388.

Alumni Action News

is published monthly by the Eastern Michigan University Alumni Association

Alumni Association Officers

John Fovenesi, '73
President
William Mays, Jr. '54
Past President
Joan Colladay, '72
President-Elect
Mike Libbing, '91
Treasurer

Alumni Action News Committee

Denise Kaercher, '88, Chair
Normajeane Anderson, '35
Gloria August, '86
Lisa Bamberger, '88
George G. Beaudette,
Director for Alumni Relations

1992-93 EMU Basketball Season Ticket Order Form

Name _____

Address _____

City/State/Zip _____

Daytime Phone _____

Ticket Types

Reserved Seat Season Tickets: Preferred seating with chairbacks in Sections 2-5

Coupon Book: A book of 16 coupons, each redeemable for a ticket to any of the men's or women's home games (doubleheaders or single games), based upon availability of seats.

**DECEMBER IS MEN'S AND WOMEN'S
BASKETBALL MONTH
GET YOUR SEASON TICKETS TODAY**

Ticket Type	# of Sets	Cost
Reserved Seat @ \$45/set	_____	_____
Coupon Book @ \$45/set	_____	_____
TOTAL		<input type="text"/>

MAKE CHECKS PAYABLE TO EMU AND MAIL TO
ATHLETIC TICKET OFFICE, EASTERN MICHIGAN
UNIVERSITY, YPSILANTI, MI 48197

NON-CONFERENCE GAMES

Men's Schedule

Nov. 23 Czechoslovakia* 7:30 p.m.
Dec. 5 Rhode Island 7:30 p.m.
Dec. 9 at Cleveland State
Dec. 11-12 at USAir Classic
Dec. 14 Ashland 7:30 p.m.
Dec. 18-22 at San Juan Shootout
Dec. 30 Lake Superior 7:30 p.m.
Jan. 2 at Michigan 2:00 p.m.

Women's Schedule

Nov. 18 Western Ontario* 7:30 p.m.
Dec. 1 Wisconsin-Milw 5:15 p.m.
Dec. 4-5 at U-Illinois Tourney
Dec. 12 Butler 3:00 p.m.
Dec. 15 Illinois-Chicago 6:00 p.m.
Dec. 21 at Valparaiso
Jan 2-3 at U-Richmond Tourney

* Exhibition

Complete Men's and Women's Double Round Robin
Mid-American Conference Schedule Begins in January.

Home MAC Women's Games Begin at 5:15 p.m. and Men's Games at 7:30 p.m.

Eastern Michigan Football

The Eagles are on the road in
November

Follow the Big Green to:
Central Mich. Nov 7 1:00 p.m.
Toledo Nov. 14 7:30 p.m.
or
follow EMU via the airwaves
WEMU 89.1 fm
or
WAAM 1600 am

Office for Alumni Relations
15 Welch Hall
Eastern Michigan University
Ypsilanti, Michigan 48197

Bulk Rate
Non-Profit Org.
U.S. Postage
PAID
Ypsilanti, MI 48197
Permit No.139