

Bert Ramsay



John Hubbard



Clayton Long

Regents approve Ramsay, Hubbard and Long as acting department heads

The EMU Board of Regents appointed Dr. O. Bertrand Ramsay acting head of the Chemistry Department, Dr. John Hubbard acting head of the Department of Foreign Languages and Bilingual Studies and Dr. Clayton Long acting head of the Department of Operations Research and Information Systems at its regular monthly meeting Aug. 20.

Ramsay replaces Dr. Ronald Collins who was promoted to associate vice president for academic affairs by the Regents June 18.

A native of Baltimore, Md., Ramsay earned a bachelor's degree from Washington and Lee University in 1955 and a doctorate from the University of Pennsylvania in 1960.

Ramsay, 47, began teaching at Eastern in 1965. Prior to his EMU appointment he served as research fellow at the Georgia Institute of Technology, an assistant professor of chemistry at the University of the Pacific in Stockton, Calif., and as a research fellow and instructor at Northwestern University. Also, he was selected as a National Science Foundation faculty fellow and studied at the University of Wisconsin from 1968 to 1969.

An expert on the history of

chemistry, Ramsay is active in numerous professional chemistry organizations including the American Chemical Society, the History of Science Society, the American Association for the Advancement of Science and the Society for the History of Chemistry. He is an Ypsilanti resident.

Hubbard replaces Dr. Jean Bidwell as head of the Department of Foreign Language and Bilingual Studies. Bidwell, who has served as head of the department since 1974, will return to her teaching duties after a sabbatical leave.

A 41-year-old native of South Bend, Ind., Hubbard began teaching at Eastern in 1969. He earned his bachelor's degree in German from Hope College in 1961 and a doctorate from Michigan State University in 1971.

An expert on contemporary West Germany, Hubbard was a Fulbright Research Fellow at the University of Munich from 1968 to 1969. He is a member of the American Association of Teachers of German and Delta Phi Alpha, honorary German Society.

During his tenure at Eastern, Hubbard worked to establish Eastern's unique Language and International Trade Program.

The program offers American and foreign students the opportunity to take university courses while completing a professional business internship with a local firm.

Hubbard is a resident of Ann Arbor.

Long replaces Dr. Robert Holland as head of the Department of Operations Research and Information Systems. Holland left the University to take another position.

Long, 35, is a native of Washington, D.C., and earned his bachelor's degree and a master's degree from East Carolina University in 1968 and 1971 respectively. He earned a doctorate from the University of South Carolina in 1975.

Prior to his EMU appointment in 1978, Long served for two years in the U.S. Navy and was an assistant professor of economics at East Carolina University for three years. Also, he worked as a teaching associate at the University of South Carolina for two years.

Long is a member of the American Institute of Decision Sciences and the American Statistics Association. He is an Ypsilanti resident.

All three of the appointments are effective immediately.

Be a pedal pusher in WEMU's race

Public radio station WEMU-FM, in cooperation with the United States Cycling Federation (USCF) and the Michigan Bicycle Federation (MBF), will bring bicycle racing to the EMU campus when the First Annual WEMU-FM Pedal Pusher Classic gets underway Sept. 13.

The event is being sponsored by Stroh's Brewery.

The program actually consists of three separate events: a tourist evaluation test (TEC) and over-the-road gymkhana, USCF bike races and BMX youth races.

The total program offers something for everyone. For the competitive-minded individual, the TEC ride is open for anyone who wants to enter, while the BMX races are open to the younger riders.

But the spectator certainly is not left out of the fun.

Highlighting the day's events will be a USCF program featuring 11 different classes in

racing. To compete in the USCF events, riders must hold a valid USCF license and classification.

The USCF is the governing body of bicycle racing in the United States. It sanctions many races in this country every year and also stages the national championship races in both road and track events. The USCF is also responsible for selecting, through an intensified racing program, the U.S. Olympic cycling team.

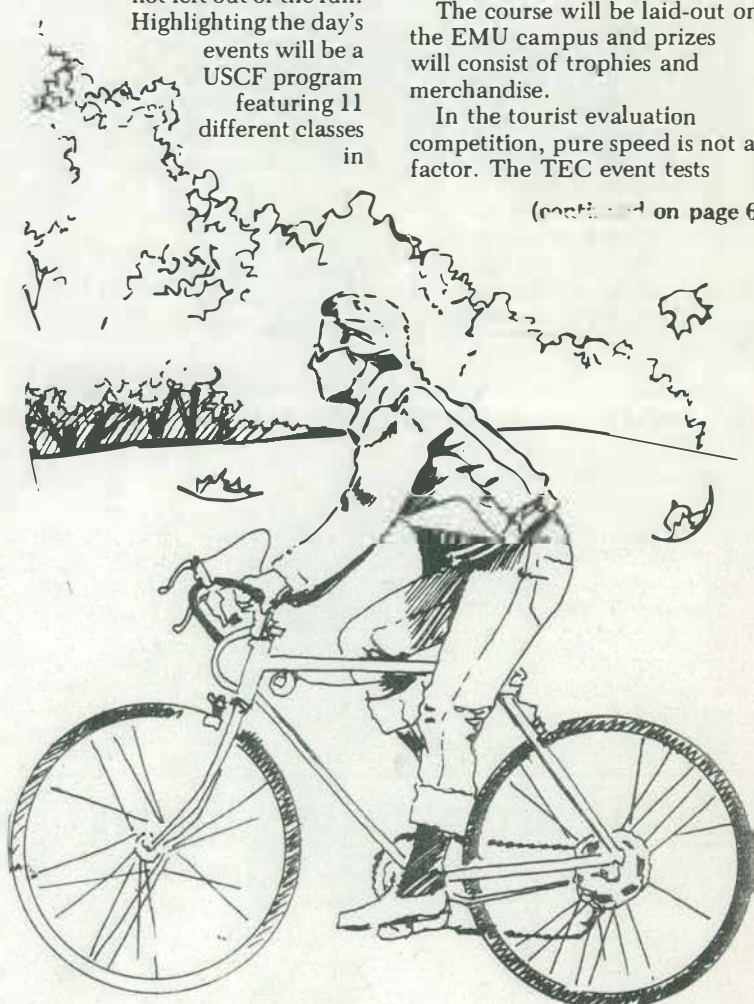
The USCF classes include midget boys, midget girls, intermediate boys, intermediate girls, junior men, junior women, senior women, senior men - categories I and II, senior men - categories III and IV, veteran men and veteran women.

The race will consist of sprint heats, a miss-and-out race and points race.

The course will be laid-out on the EMU campus and prizes will consist of trophies and merchandise.

In the tourist evaluation competition, pure speed is not a factor. The TEC event tests

(continued on page 6)



Campus Capsules

Women's Association to host tea

The EMU Women's Association will host a membership tea Friday, Sept. 12, at the President's residence from 3-5 p.m. All EMU staff women are invited. Guests of honor will be the 1980-81 association scholarship recipients: Colleen Smeekens, Anne Williams, Lynn Eilber-Gumos, Marlies Sanders and Elizabeth Riccardi. Please RSVP by Sept. 8 by calling Rosella Bannister at 487-2292; Joanne Hansen at 487-3191; or Bonny Maynard at 487-2220.

University Publications offers brochures

The University Publications office has a free supply of the following items: "12 Questions Brochure," an attractive, four-color brochure available to departments for recruitment;

desk copies of the 1980-81 spiral bound Undergraduate Catalog (limited supply); and copies of the 1979 edition of the Visitors Guide and Campus Map, still containing pertinent information. Call Donna at 487-0451 or stop by University Publications located in Dining Commons I for a supply.

Piano lessons for children, parents offered

The Department of Music in cooperation with the Division of Continuing Education will offer, on a limited basis, piano instruction for children ages 5-7 based on the methods of Suzuki, Kodoly and Dalcroze. The same parent must accompany the child throughout the program. Classes (limited to 5 students) will meet one hour Monday and Saturday for 13 weeks. Tuition is \$130. For more information, call Patrick Barley, manager of Credit-Free Programs at 487-0312.

Wives Club hosting tea

The EMU Wives Club is welcoming all wives of new EMU faculty and staff with a desert tea to be hosted by President and Mrs. Porter Tuesday, Sept. 16, at 7:30 p.m. at the president's house. For more information, call Newcomer Chairwoman Dottie Ludlow at 434-6508.

Memorial scholarship fund established

A scholarship fund in memory of Iris McSurely, a senior nursing education student, has been established to provide scholarships to nursing students at EMU. Contributions to the fund may be made through the EMU Development Office. McSurely died of cancer in May and is survived by her husband, Hugh, and three children.

Former Fulbright scholars sought

If you are an EMU faculty or staff member, or a student, who has been the recipient of a Fulbright Award and would like to provide encouragement to Fulbright applicants, call Dr. Sandra E. Wright, Office of International Studies, at 487-2424. A meeting will be scheduled during the fall semester.

U.S., France program seeking scientists

The U.S.-France Exchange of Scientists Program between the National Science Foundation in Washington, D.C., and the National Center for Scientific Research in Paris, France, is accepting applications for study or work in the mathematical, physical, chemical, engineering,

biological and social sciences including economics. Applicants must have earned a doctorate or equivalent not more than five years prior to the commencement of the exchange visits, which span between 5 to 15 months. Application deadline is Nov. 1, 1980, with awards announced by March 1981. For further information, contact the National Science Foundation (Division of International Program), 1800 G Street, N.W., Washington, D.C. 20550.

'Quarterback Luncheons' held every Thursday

EMU Quarterback Luncheons, formerly the EMU Fan Club luncheons, will be held every Thursday at noon at Woodruff's Grove Restaurant during the football season. Everyone is invited to attend and hear about the football team and season. A buffet luncheon will be available for \$3.50.



Mark Wallace

Wallace is computer coordinator

Mark Wallace, a 38-year-old native of Detroit, was appointed coordinator of divisional programming for student affairs in University Computing by the EMU Board of Regents at its regular monthly meeting Aug. 20.

Wallace replaces Joe Jorfi who was promoted to assistant director of admissions.

Wallace earned an associate's degree in computer science and business from Schoolcraft Community College in 1974 and currently is working towards his bachelor's degree at EMU. He is an Ypsilanti resident.

Wallace comes to EMU from the FTD Corp. in Southfield where he worked as a senior programming consultant. Also, he worked as a senior programmer analyst at University Hospital in Ann Arbor for three years.

At EMU, Wallace will assign and schedule programming tasks to support personnel of assigned areas; analyze system problems and institute corrective action; assist in reviewing industry changes in computer systems, supportive programs and equipment; evaluate existing systems and programs in designated area

(continued on page 6)

McCoy changes hats; now acting associate dean

Dr. Robert C. McCoy, who served as acting dean of the College of Business from November 1979 until a permanent dean was appointed in March 1980, was appointed acting associate dean of the college by the EMU Board of Regents at its regular monthly meeting Aug. 20.

McCoy, 59, earned his bachelor's degree from Albion College in 1942 and a master's degree in clinical psychology from Wayne State University in 1947. Also, he holds a doctorate from Wayne State (1966) and is a certified psychologist.

Prior to joining Eastern's faculty in 1972, McCoy served as a consulting personnel psychologist and was a member of the organization and personnel staff of the Ernst and Ernst Management Consulting Services Division from 1968 to 1972. From 1964 to 1968, he worked as a staff psychologist with William, Lynde and Williams, a national psychological consulting organization.

McCoy served as assistant director of labor relations and personnel services of the American Motors Corp. from 1961 to 1964.

A resident of Ann Arbor, McCoy has served as a part-time faculty member at Wayne State and has been a seminar and conference leader for the American Management Association and other management organizations.

He is active in numerous professional organizations and is a former vice president of the Detroit Chamber of Commerce, a board member of the Ann Arbor chapter of the American Society of Training Directors and a trustee of Albion College. In addition, he serves as a vice president of the John C. Campbell Folk School in Brasstown, N.D., and is a member of the Michigan Quality of Work Life Council.

McCoy is a member of numerous honorary



Robert McCoy

organizations and has published many articles in business and training periodicals. He is included in "Who's Who in the Midwest" and in "Community Leaders and Noteworthy Americans."

His appointment is effective immediately.

Seven join EMU faculty

Seven new faculty members were appointed in three academic departments by the Board of Regents at its regular monthly meeting Aug. 20.

Three of the new appointments were in the Department of Accounting and Finance. Loren Anderson was appointed assistant professor while Rolland Cooper and Greg Dunning were appointed instructors.

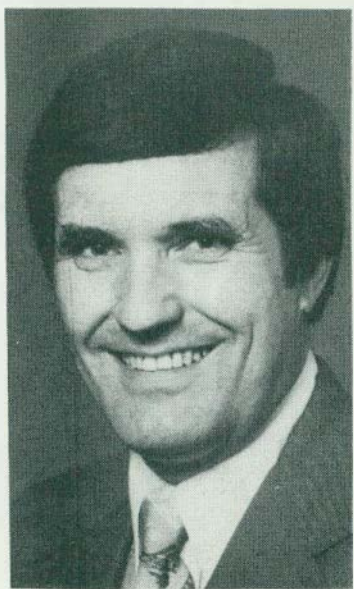
Anderson, who has taught at Eastern part-time since January, earned his bachelor's degree from the University of North Dakota in 1964 and a master's degree from the University of Pittsburgh in 1968. Anderson has worked at L.W. Anderson Ltd. since 1979 and worked at Real Estate One, Inc., from 1976 to 1978.

Cooper earned his bachelor's degree from the University of Texas in 1976 and a master's degree from Eastern in 1980. He is a certified public accountant and taught at Hillsdale College from 1979 to 1980. Also, he has served as a part-time instructor at Washtenaw Community College and Henry Ford Community College.

Dunning studied at Lake Michigan College and completed requirements for his bachelor's degree at Western Michigan University in 1973. He earned his master's degree from Eastern in 1975. Since 1977, he has taught at WMU and served as the cost accounting manager for the Hayes-Albion Corp.

Pradeep Chowdhry and Jean McEnery were appointed assistant professors and Amelia Chan was appointed instructor in the Management Department.

Chowdhry earned his bachelor's degree from the Banaras Hindu University in India in 1973 and a master's degree from Northern Arizona University in 1975. Prior to his EMU appointment, he taught in



Joseph Jorfi

(continued on page 6)

Upward Bound grant tops list of grants accepted by Regents

A \$138,717 continuing grant from the U.S. Department of Education, which will be used to fund Eastern's Upward Bound Program for economically disadvantaged underachieving students, topped a list of 10 educational grants totalling \$397,617 accepted by the Board of Regents at its regular monthly meeting Aug. 20.

Eastern's Upward Bound Program encourages area high school students to develop academic skills and the motivations necessary to succeed in high school and in college, to grow in personal and social skills to enrich their lives, and to establish and attain their career goals.

Many of the students in the Upward Bound Program have more potential than grade point averages and standardized test scores indicate. All of the students are from economically disadvantaged families and are "educationally deficient in numerical and verbal skills." Eastern's program, directed by Hildred Lewis, has been highly successful in serving more than 100 area students each year and developing the student's academic potential.

The EMU Regents accepted six new educational grants including a \$13,000 grant from the Michigan Sea Grant Program to fund a project titled "Wetland Development Options and Strategies and Their Relative Environmental Impact." The project, which will be directed by Dr. Eugene Jaworski of the University's Institute for Community and Regional Development, will "investigate the environmental impact of various wetland development alternatives."

The project will study the impact of wetland development utilizing several research methods including aerial photography, field investigations, laboratory analyses and sedimentation research techniques in wetlands. The study will document the impact of various wetland developments on the habitat, flora, hydrology and water quality of wetlands.

Another new \$11,500 grant accepted by EMU Regents funded a summer youth employment program sponsored by the Washtenaw County Comprehensive Employment Training Office (CETA) at the University. Qualified CETA youth were placed in select University positions for 10 weeks, during which time they received three hours of classroom instruction in history, communication skills and math. The program was coordinated by Dr. Anthony Ingram, an assistant professor in Eastern's Afro-American Studies Program.

A new \$5,050 grant from the Association of Michigan Economic Education Centers will fund a new EMU graduate course titled "Trade Offs: A Credit Course for Teachers" offered through the Michigan Consumer Education Center located at EMU. The goal of the course is to strengthen consumer and economic education in elementary and junior high schools in southeastern Michigan. Teachers who participate in the program will be taught to solve consumer economic problems. The course will be administered by Rosella Bannister, director of the Michigan Consumer Education Center.

Two parenting workshops, presented by faculty members from Eastern's Institute for the Study of Children and Families, were funded by new grants accepted by the EMU Regents. A new \$4,680 grant from Nova University in Ft. Lauderdale, Fla., funded a foster parent training workshop presented by Dr. Pat Ryan of EMU's Institute for the Study of Children and Families while a \$580 grant from the Ecorse Public School System funded a week-long parenting workshop presented by Dr. Bruce Warren, also of the Institute.

A survey of consumer and economic education was funded by a new \$1,600 grant from the National Bank of Detroit and the Association of Michigan Economic Education Centers. The survey was conducted by EMU's Michigan Consumer Education Center and explored the current status of consumer and economic education in Michigan schools. The survey was directed by Rosella Bannister, director of the Michigan Consumer Education Center.

The EMU Regents also accepted three continuing grants at their regular monthly meeting including:

--A \$133,102 continuing grant from the Department of Health, Education and Welfare to fund the University's Bilingual Teacher Education Training Program. The program is administered by Dr. Raymond Padilla.

--A \$59,888 continuing grant from the Department of Health, Education and Welfare to fund the University's bachelor's degree program in health service administration. The program is directed by Dr. Peter Dual, newly appointed dean of Eastern's College of Human Services.

--And a \$29,500 continuing grant from the Michigan Department of Education to fund the third phase of Eastern's Contemporary Parenting Program. The program is directed by Dr. Bruce Warren, director of the University's Institute for the Study of Children and Families.

In addition, the Regents accepted twelve educational grants totaling \$1.6 million at their May meeting and another seven educational grants totaling \$348,000 at their June meeting.

These grants, excluding student financial aid grants processed by the Financial Aid Office, brought the 1979-80 fiscal year's grant total to over \$7 million, a 212 percent increase from last year's total.

Among the new educational grants accepted by the EMU Board of Regents were:

— a \$196,900 grant from the National Science Foundation to help EMU chemistry students train for careers as industrial chemists.

— a \$162,800 grant from the U.S. Office of Education in the Department of Health, Education and Welfare to fund a Bilingual Vocational Education Instructor Training Program.

— a \$99,700 grant from the Charles Stewart Mott Foundation to fund a Community Education Leader's Renewal Project.

— and a \$47,500 grant from the U.S. Department of Energy to provide energy efficient lighting for Eastern's Bowen Field House.

**Emergency
on
Campus?** Call 1-2-3

Focus on Faculty

Winton Kloosterman's concern leads him to research athletic recruitment

by Marlene Davenport

By now, most high school seniors have selected a college to attend this fall if that's what their personal or career goals require. With the help of family, friends and high school guidance counselors, among others, most prospective collegians looked at various colleges and their programs, applied for admission and are now becoming college freshmen.

But for a few, the process is different. colleges seek them out instead. It's called athletic recruitment.

In highly competitive collegiate athletic programs, attracting a steady stream of promising high school athletes has taken a serious turn.

The stakes are high.

Successful recruiting of promising high school athletes can mean increased visibility, recognition and often financial support for a college.

hounded by recruiters" was the exasperated response of one high school counselor, according to Dr. Winton A. Kloosterman.

Kloosterman, a professor in the EMU Guidance and Counseling Department, recently completed a study on the role of guidance counselors in the choice of a college made by highly recruited high school athletes.

Kloosterman surveyed 200 high school guidance departments throughout the U.S. who had seniors recruited by a college for the 1979 freshman year. For the study, Kloosterman picked male recruited students who had participated in one of five sports in high school: football, baseball, basketball, track and field, and swimming.

Some 86 high school guidance departments responded to Kloosterman's questionnaire and many were interviewed per-

the most influence in a high school athlete's choice of college (36 percent). Other influences were parents or guardians, 17 percent; college coaches or recruiters, 15 percent; and guidance counselors, not quite 3 percent.

-Most of the guidance departments (80 percent) responded that the college applications of student athletes were processed similarly to other students' applications to colleges, but eight departments (11 percent) said that athletes who were recruited were processed in a special way.

-Almost 38 percent of the athletes recruited, reported the guidance departments, seldom or never used the assistance of the guidance department. The departments noted that 18 percent of the recruited athletes made frequent use of the department's services and 35 percent occasionally used the services.

Kloosterman commented about the system of athletic recruitment of high school students.

"Athletic recruitment is big business. Unless someone is around to help a high school athlete (select a college), an athlete may find himself in a situation which is hard to cope with," he remarked.

That "someone" may not necessarily be a counselor, but the professional skills of a school counselor can be helpful if the help of family members or friends is not sufficient.

Kloosterman hopes that "counselors can take a more assertive approach (in the athletic recruitment process). High school athletes should have the same opportunity to review colleges as any other



Winton Kloosterman

students," he explained.

"Guidance counselors can be on the side of the student who wants to think (his college choice) over, acting as a shield," he added.

The ideal situation is when high school counselors work with athletic recruiters, says Kloosterman. "If all (college-bound students) were processed

through the system, it would eliminate a lot of pressure on student athletes and ease the college choice decision for them."

Kloosterman will present his study in an address at the Michigan Personnel and Guidance Association's meeting in Detroit in November.

"Athletic recruitment is big business. Unless someone is around to help, a high school athlete may find himself in a situation which is hard to cope with. High school counselors can take a more assertive approach."

It's a process, though, that can lead to a lot of pressure for the young athlete who suddenly finds himself or herself sought out by a multitude of athletic recruiters. In many cases it also leads to frustration for high school guidance counselors who are used to supplying career and college information and are suddenly watching from the sidelines.

"You don't expect me to be able to influence this young man when he is continually

sonally by him.

Some of the findings presented in Kloosterman's report are:

-Prior to recruitment, nearly 22 percent of the recruited athletes had seldom or never expressed a personal or career goal which required a college education. Conversely, 39 percent of those athletes recruited by colleges frequently expressed goals requiring a college education.

-The high school coach had

Gifts, bequests increase

Development Office's contact with 48,000 alumni pays off for EMU

The Board of Regents accepted gifts and bequests totaling \$60,977 for the months of May through July at its regular monthly meeting Aug. 20.

The gift figure accepted by EMU Regents represents a \$39,472 increase when compared to gifts received by the University for the same period last year. Thus far in 1980, the University's Development Office has contacted more than 48,505 alumni seeking support for University programs.

The largest cash gift received by Regents for the period was a \$7,500 contribution from EMU Regent James T. Barnes, Jr., which will be used to fund one endowed \$750 scholarship that will be awarded to an outstanding student who enrolls at EMU. Specifically, the money will be used as part of EMU's new Presidential/Departmental Scholarship Program based on academic ability.

Barnes, a resident of Grosse Pointe Woods, was appointed to the EMU Board by Gov. Milliken last October and will serve a term that expires in 1982. He is president of the Midland Mortgage Co. and chairman and director of James T. Barnes and Co.

EMU Regents also accepted a \$5,000 gift from Irene Little Wallace, a 1924 graduate of the University who currently resides

in Birmingham, Ala. The gift will be placed in the Irene Little Wallace Scholarship Fund and used to provide an endowed scholarship for a deserving EMU English student.

A \$1,000 gift from the Maccabees Mutual Life Insurance Co. also was accepted. The gift, the fourth of five \$1,000 installments pledged by the company, is used to fund a scholarship for an outstanding sophomore or junior at Eastern.

Dr. Everett L. Marshall, who retired as dean of academic records at the University last year, contributed \$5,000 to a scholarship in his name. The scholarship is awarded to a second semester junior at EMU who has at least a 3.0 academic record and is preferably a member of the forensics team.

EMU Regents also accepted a \$1,000 gift from the Bechtel Power Foundation to fund activities in the College of Business and a \$1,102 gift from the Kiwanis Club of Greater Ypsilanti. Funds from the Kiwanis gift will be used to support five women's sports at Eastern including volleyball, tennis, swimming, gymnastics and basketball.

Regents also accepted a \$650 gift from former EMU President James H. Brickley which will be used to establish an endowed scholarship as part of the University's new Presiden-

tial/Department Scholarship Program. Brickley, who currently serves as Michigan's lieutenant governor, regularly donates his speech honorariums to fund a scholarship for political science majors at the University.

In addition, the Regents', at their May 21 meeting, accepted gifts and bequests totaling \$163,720 for the months of January through April, an increase of some \$31,700 over last year's gifts and bequests accepted during that time.

A \$50,000 unrestricted gift from Detroit's Herrick Foundation, the largest single cash gift ever received by the University, has been designated an endowment with annual earnings to be used to offset the costs of seven EMU Presidential or Departmental Scholarships.

A \$44,237 unrestricted gift from the estate of Rhona Gayleard also has been designated an endowment and the earnings will be used to offset the cost of five EMU Presidential or Departmental Scholarships. The balance will be used for faculty professional development in the Department of Administrative Services and Business Education.

A \$1,175 gift from Carlos Falcon, a former EMU admissions counselor, also was

(continued on page 6)

Jose Gurule named bilingual coordinator

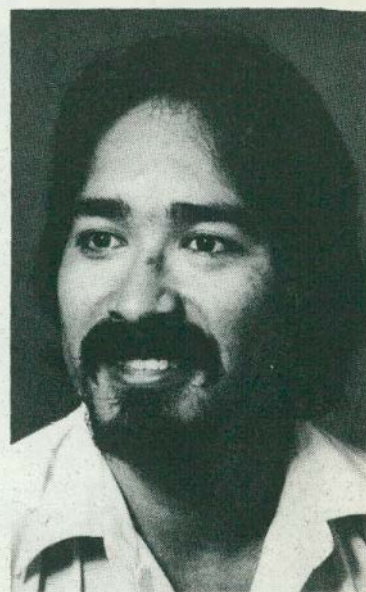
Jose Gurule was appointed project coordinator of the Bilingual Vocational Education Program by the EMU Board of Regents at its regular monthly meeting Aug. 20.

Gurule, in a newly created position, will coordinate the program's activities including reviewing, developing and evaluating instructional materials for program use, conferring with professionals to plan and develop curriculum and monitoring budget expenditures.

Prior to his appointment at Eastern, Gurule served as the director of the Westwood, Inkster and Cherry Hill Magnet School Project for desegregated gifted/talented education. Also, he has coordinated the Latin America for Social and Economical Development-Emergency School Aid Act Project in Detroit and was an alcoholism therapist with Insight, Inc., as well as director of the CERCA Center in Flint.

Gurule, a resident of Detroit, earned a bachelor's degree in 1973 from New Mexico State University and a master's degree from EMU in 1977.

Earlier this year, Gurule presented a paper titled "Identification of Gifted and Talented Minorities" at the University of South Carolina and served as a panelist at the public hearing of the Hispana Juvenile Justice Project.



Jose Gurule

He is a member of numerous organizations including La Raza Citizens' Advisory Committee of the State Board of Education and the New Detroit, Inc.-Latino Caucus.

Gurule's appointment is effective immediately.

Participants

Ellen Wilt, assistant professor of art, won an award from the Michigan Foundation for the Arts for her watercolor painting titled "Another War Picture."

Planning events? Call Information Services to get on master calendar

During the summer, the University's Executive Council adopted a policy establishing a Master Calendar. The calendar will be maintained by the Office of Information Services.

All activities scheduled on campus as well as all off-campus activities scheduled by an EMU department or organization should be listed on the Master Calendar. Activities are listed on the calendar in the order in which they are received; in case of conflicts, priority is given to the first activity registered.

The Master Calendar is distributed each month to the president, all vice presidents, the Student Affairs Division Program Council and all members of the Board of Regents. Information from the Master Calendar is used for the monthly EMU calendar of events which is distributed to all campus departments, all student organizations (through the Campus Life Office), the residence halls, the Board of Regents and various news media. It is from this monthly calendar that the Ann Arbor News, The Ypsilanti Press and other news outlets obtain information for their own events calendars.

Items to be included on the Master Calendar should be submitted in writing to the Office of Information Services, second floor, Snow Health Center. For information about activities scheduled for a particular day on which you might be planning an activity, call Information Services at 487-4400.

The deadline for submission of items for the Master Calendar is as follows: Sept. 19 for October; Oct. 17 for November; Nov. 21 for December; Dec. 19 for January; Jan. 23 for February; Feb. 20 for March; and March 20 for April.

Piano recital to be given in Pease

Donald R. Harrell, an EMU master's degree candidate who teaches choral and instrumental music in the Lincoln Consolidated School District, will present a graduate degree recital Sunday, Sept. 14 at 3 p.m. in Pease Auditorium.

Harrell, who plays the trumpet, earned his bachelor's degree in music from Miami University in 1968 and a master's degree in music education from the University of Michigan in 1971.

In his EMU recital, Harrell will be accompanied by his wife, Mary K. Harrell, on the piano and harpsichord. Also assisting in the recital are Paul Bravender, narrator; Cynthia Ferris, flute; Judith Iannaccone,

(continued on page 6)

Regents give nod to promotions, retirements and appointments

Several appointments, promotions and retirements were approved by the Board of Regents at its regular monthly meeting Aug. 20.

New staff appointments included Beverly Baker, secretary in the clerical pool; Marsha Ann Berjeski, cashier in the Cashier's Office; Jeffrey Bozsik, cashier in the University Bookstore; Linda Brown, account clerk in University Accounting; Leroy Ceaser, floater custodian in the Physical Plant Department; Carol Dawson, clerk in the Purchasing Office; Donald Eyester, custodian in the Housing Office; Maura Gelpi, supervisor in McKenny Union; Steven Guy, custodian in the Physical Plant Department; Linda Heim, secretary in the clerical pool; Phyllis Holtzman, clerk supervisor in the Financial Aid Office; Claude Jackson, safety officer in the Department of Public Safety and Sherry Jackson, custodian in the Housing Office.

Other staff appointments included Robert Kopke, computer operator in University Computing; Judy Lester, clerk typist in the University Bookstore; Beverly Lockett, secretary II in the Employee Relations Office; Ann Marie MacDonald, resident manager in the Housing Office; Warren Morche, elevator repair/control specialist in the Physical Plant Department; Jacqueline Nelson, clerk/typist in the Academic Records Office; Earlene Patterson, secretary II in the Afro-American Studies Program; Michele Rich, secretary II in the Athletic Office and Ralph Richardson, electrical maintenance appraiser in the Physical Plant Department.

The Regents also appointed Earl Roggeman, senior clerk in the Financial Aid Office; Marilyn Smith, secretary II in the Academic Services Center; Tammy Smith, secretary in the clerical pool; Susan Terry, senior clerk in the Financial Aid

Office; Florence Witte, Library assistant II in the Center of Educational Resources; and Diane Tatum, senior clerk/typist in the Graduate School.

Staff promotions included Patricia Batey, keypunch operator to account clerk in University Accounting; Michelle Barnes, secretary to senior secretary in Community Education; Joan Brougham, library assistant II to library assistant III in the Center of Educational Resources; Jacqueline Brown, account clerk to senior account clerk in University Accounting; Patricia DeSautel, key entry operator to key entry verifier in University Computing; Rhonda Hartwell, account clerk in University Accounting to secretary II in the Division of Continuing Education; Karen Jahnke, account clerk in the Payroll Office to secretary II in the Staff Benefits Office; Mary Roach, account clerk to senior account clerk in University Accounting; Mary Ann Tice, cashier in the Snow Health Center to library assistant II in the Center of Educational Resources; and Marjorie Townsend, custodian in the Physical Plant Department to driver in University Stores.

Retiring from University service are Mary Bishop, first cook in Hoyt Dining Center, effective July 18; Virginia Bower, clerk/typist in the University Bookstore, effective June 30; Mildred Cleeton, administrative secretary in the Financial Aid Office, effective July 7; Maxine Cripps, food service helper in McKenny Union, effective June 30; Beltron Gray, custodian in the Housing Office, effective June 30; Fred McDaniel, admissions officer in the Admissions Office, effective July 11; and Wayne Morgan, manager of the University Bookstore, effective June 27.

Environment as art

Paris transplant opens Sill's season

"The installation will be a site specific work, using the components of Sill Gallery. Rather than being an art object, it is more like an environment created by the artist."

That's how Jay Yager, an associate professor of art and coordinator of Sill Gallery at EMU described "installation" as a means for artistic expression. Yager was referring specifically to an upcoming EMU exhibit that features the work of Detroit artist Naomi Dickerson in Sill Gallery Sept. 8 through Oct. 3.

Yager said that Dickerson's installations tend to be linear constructions, though he isn't quite sure what she has planned for Sill Gallery.

"The idea of using the ar-

chitectural space of Sill Gallery as the format for the work is interesting... The gallery space will determine the limitations of the work. The trend in this kind of art is toward more ethereal works -- things that don't last," Yager added.

EMU's gallery coordinator also mentioned that Eastern's gallery space has been enhanced with the addition of track lighting and a heightened ceiling.

Dickerson's exhibit will open the 1980-81 Sill Gallery series at Eastern which features 17 free public exhibits that continue through June 5, 1981.

A native of Detroit who currently resides in Paris, France, Dickerson earned her bachelor's degree and a master's

degree from Wayne State University.

From 1973 to 1975 she served as an assistant to the curator of graphic arts at the Detroit Institute of Arts and in 1976 and 1979 she served as a painting instructor at Wayne State.

Dickerson has received numerous grants and scholarship awards for her work and has exhibited widely. Recent exhibits include "Three Dimensional Drawings," a solo exhibition sponsored by the Artist's Guild in Detroit; "Works on Paper," an invitational exhibition of the Feigenson-Rosenstein Gallery; "Recent Drawings," an exhibit at the Detroit Artist's Market; and "The Women's Suite," a juried exhibit featuring the work of seven Michigan artists.

The exhibit is open to the public from 8 a.m. to 5 p.m. Monday through Friday.

Mary Wiermanski now is President Porter's executive assistant

Mary Wiermanski, former director of communications for the Council of State School Officers in Washington, D.C., was appointed executive assistant to President John W. Porter Aug. 20 by the EMU Board of Regents at its regular monthly meeting.

Her appointment was effective Sept. 8.

A native of Chicago, Wiermanski, 26, attended John Carroll University and earned a Bachelor of Arts degree in mass communications from Western Illinois University in 1975. She also earned a Master of Arts degree in educational communications from Glassboro State College in 1977.

While at Glassboro State, Wiermanski was employed as a graduate assistant in the Communications Department. In 1976, she was appointed communications specialist in the Department of Communication Services of the Macomb Intermediate School District in Mt. Clemens. Her responsibilities included consulting on public relations; conducting opinion research and needs assessment projects; producing newsletters, brochures, filmstrips and publications; writing news releases; coordinating conferences and inservice

programs; and editing grant proposals, reports and publications.

She was appointed director of communications for the Council of Chief State School Officers in April 1979. As the communications director, she was responsible for establishing and conducting a communications program, developing and implementing public relations programs, serving as a public relations consultant, serving as a liaison with the news media, developing and producing publications, media announcements, feature stories, slide presentations and speeches, and organizing national meetings and conferences.

Wiermanski has served as a consultant to the Michigan School Public Relations Association, Micro Guide System, Inc., a corporation featuring a computer based guidance and career information system, the National Association of State Education Department Information Officers, the National and Michigan School Public Relations associations, the Synergy Group, Inc., a corporation providing public relations, opinion research and financial election consultant services to educators, and the



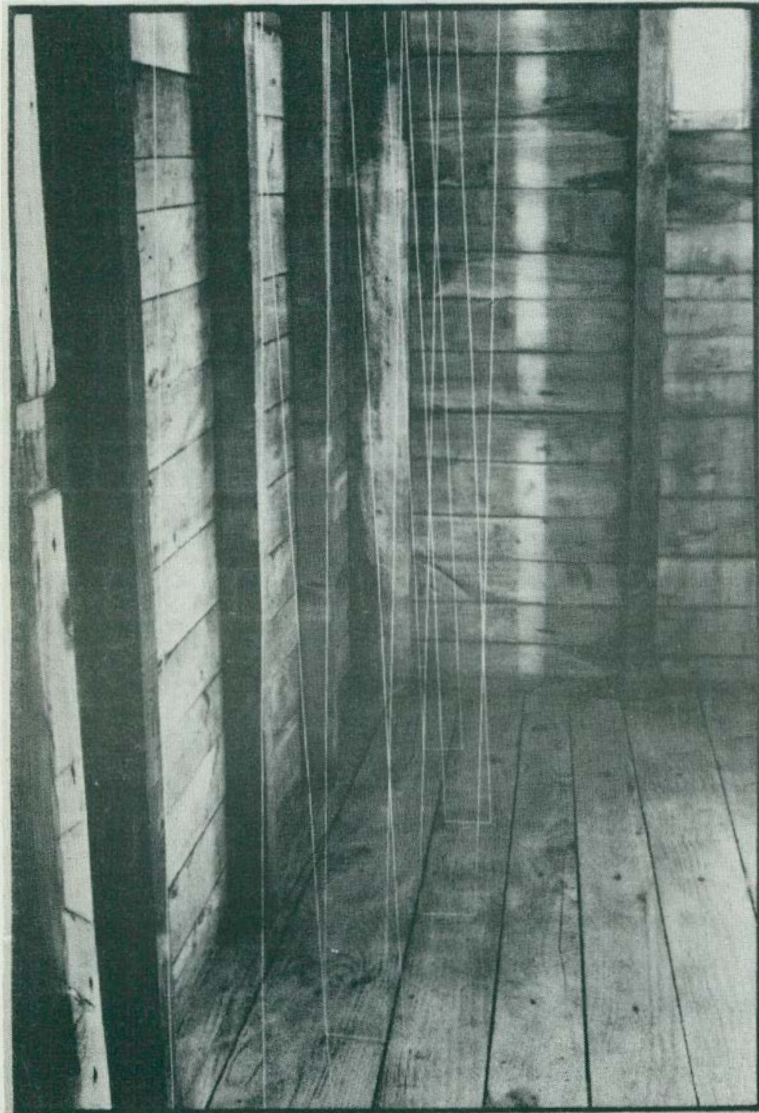
Mary Wiermanski

Program for Human Resource Development at the University of Michigan.

Her publications have won awards from the National and Michigan School Public Relations associations.

Wiermanski is a member of the American Marketing Association, the Educational Press Association of America, the International Association of Business Communicators and the Michigan School Public

(continued on page 6)



The Sill Gallery 1980-81 season opened yesterday with a unique exhibit featuring an "installation" created by artist Naomi Dickerson, a Detroit native residing in Paris, France. "The gallery space will determine the limitations of the work. The trend in this kind of art is toward more ethereal works -- things that don't last," explained Jay Yager, associate professor of art at EMU. The photo shows a sample "installation" created by Dickerson in France.

Computer plays matchmaker

University community can ease commuter woes with ridesharing program

The Ann Arbor Transportation Authority (AATA) is assisting Eastern in organizing a ridesharing program for EMU staff, faculty and students.

This free service uses a computer to match riders with car pools, van pools and buses in their area and provides a list of potential ride choices to each applicant.

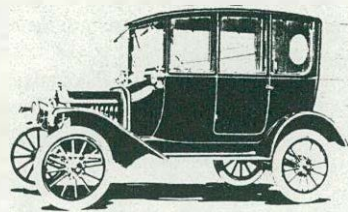
Then it is up to the applicants to form a car or van pool, with helpful organizing hints provided by AATA. There are two types of car pools: shared driving or shared riding. With shared driving, each person in the pool takes a turn driving his or her own car on a daily, weekly or monthly basis. Members pick up the costs each time they drive.

With shared riding, a designated member, usually the

most distant, picks up all other members of the car pool. One car is used and members then share all costs or share costs from the pickup point to work.

If many applicants are able to form one pool, AATA will arrange to obtain a van. One of the benefits for the vand river is that he or she rides free every day and has personal use of the van during non-working hours and weekends.

The savings in monthly transportation costs by using a pool vary, but Michigan



Department of Transportation figures indicate that those in car pools can save as much as \$30 to \$200 a month in costs depending on the number of riders, the driving distance and type of car.

Tom Davis, associate director of the EMU Institute for Community and Regional Development, is the University's coordinator of the program. For further information, or an application, call Davis at 487-1480 or June Davis, EMU personnel director, at 487-3430.

Completed applications should be sent as soon as possible to Tom Davis, Room 203, Strong Building.

Susan Burt takes new University post



Susan Burt

Susan O. Burt was promoted from project officer to assistant dean of the Graduate School by the EMU Board of Regents at its regular monthly meeting Aug. 20.

Burt, 29, replaces Charles Minneman who resigned his post and is taking a leave of absence from the University.

As assistant dean, Burt will be responsible for assisting in the development and implementation of administrative policies and objectives. She also will plan and supervise the fiscal management and administrative activities of special projects for the Graduate School.

In addition, she will advise faculty, students and staff regarding departmental policies and procedures, select, approve and purchase departmental supplies and interview, train and evaluate clerical and

student support staff.

Burt joined the University staff as a project officer in the Office of Research and Development in 1978. Prior to her EMU employment, she served as a research analyst and aid to the mayor in Westland.

Burt, a native of Dearborn, earned a bachelor's degree in government from the University of Notre Dame in 1973 and a master's degree in education and community development from the University of Michigan.

DISCLAIMER

By signing this application, the applicant acknowledges that the Ann Arbor Transportation Authority is facilitating the exchange of names and phone numbers to promote carpooling arrangements, but is in no way assuming responsibility for such matters as vehicle safety, passenger safety, or passenger convenience; the applicant for himself or herself and his or her executors, administrators or assigns, waives and releases all rights or claims for damages against the Ann Arbor Transportation Authority, its employees or agents, relating in any way to participation in such carpooling arrangements.

The applicant further authorizes the release of his or her name, address, and contact telephone number unless requested otherwise in questions 16 and 17.

Completed applications with the signed disclaimer should be returned as soon as possible to Tom Davis, Room 203, Strong Building, EMU. For more information, call Davis at 487-1480 or June Davis, EMU personnel director, at 487-3430.

Date

Applicant's Signature

1. NEW APPLICATION ☐ DATA CHANGE ☐

2. TODAY'S DATE (EXAMPLE 02 24 80)

3. FIRST LAST NAME

4. HOME ADDRESS

5. NEAREST INTERSECTION AND

6. CITY, VILLAGE OR TOWNSHIP ZIP CODE

7. EMPLOYER NAME

8. WORK STREET ADDRESS

9. NEAREST INTERSECTION AND

10. CITY, VILLAGE OR TOWNSHIP ZIP CODE

11. AREA CODE TELEPHONE NUMBER EXTENSION WORK HOME ☐

12. ARRIVE AT WORK : AM ☐ PM ☐ DEPART FROM WORK : AM ☐ PM ☐

13. CHECK IF YOUR HOURS ARE FLEXIBLE BY MORE THAN 15 MINUTES. ☐

14. CHECK IF YOU OBJECT TO RIDING WITH SMOKERS. ☐

15. CHECK IF YOU DO NOT HAVE A CAR AVAILABLE OR WOULD PREFER NOT TO USE YOUR CAR. ☐

16. CHECK IF YOU OBJECT TO YOUR HOME ADDRESS BEING PRINTED ON OTHER PEOPLE'S MATCH LISTS. ☐

17. CHECK IF YOU OBJECT TO YOUR LAST NAME BEING PRINTED ON OTHER PEOPLE'S MATCH LIST. ☐

18. CHECK THE DAYS OF THE WEEK YOU WORK. ☐ M ☐ T ☐ W ☐ TH ☐ F ☐ SA ☐ S

19. IF YOU HAVE ANY COMMENTS OR A UNIQUE RIDING SITUATION, PLEASE USE THE SPACE BELOW TO ELABORATE.

AATA RIDESHARING PROGRAM APPLICATION

OFFICE USE ONLY

HOME ADDRESS

OFFICE ADDRESS

Pedal pusher

(continued from page 1)

skill and proficiency. Classes for the TEC competition will be divided into three age groups: 12-14 year olds, 15-18 year olds, and 18 years and up.

The over-the-road event will take riders on a scenic route from Ypsilanti to Dexter and back. It is not a race, but the winner will be determined by a points evaluation system.

All entrants in the TEC event will receive a patch. In addition, trophies will be awarded to the first, second and third place finishers in each class.

The bicycle moto-cross (BMX) youth races, laid-out on a rugged course on the EMU campus, promise to be exciting, challenging and will offer keen competition.

There is a \$6 entry fee. In addition, the first 200 paid registrants of WEMU-FM's Pedal Pusher Classic will receive a free "Pedal Pushers" T-shirt.

Check-in time is at 8 a.m. at Huron River Drive and Barbour Road, on the EMU campus. For registration or event information, contact WEMU-FM radio station at 487-2229.

Participants

John C. Davidek, a post-master's degree student at EMU and a Flint school teacher, was awarded a fellowship through the Japan Institute for Social and Economic Affairs (JISEA) for a two-week study tour of Japan this summer. Davidek was one of 20 fellowship recipients selected from 650 applicants across the country.

Ralph Gilden, director of high school and community college relations, was elected to the Directorate of Commission II of the American College Personnel Association.

Wiermanski

(continued from page 4)

Relations Association, among others.

As executive assistant to President Porter, Wiermanski will perform administrative functions and provide general support for the activities of the Office of the President. She will coordinate such ceremonial activities as Honors Convocation and Commencement Exercises, conduct research for specialized reports, draft office responses, speeches and correspondence for

the president, chair the Washtenaw United Way Campaign for the University, handle arrangements for selected receptions at the President's Residence, coordinate the functions and activities of the Emeritus Faculty Association and assist in the preparation and monitoring of the department budget.

Career Planning & Placement

To kick off the activity schedule at the Career Planning and Placement Center for 1980/81, a number of workshops and seminars have been arranged predominantly for seniors. These sessions are primarily to help those students (undergraduate and graduate students) launch their career search campaign. We always advise seniors to make their career search a full school year activity. The search consists of many steps. The earlier the start the better will be the chance that an individual will find a position soon after graduation.

The initial workshops (there will be several more throughout the fall term) will cover an Orientation to Placement Services and will cover the creation of the credential packet and use of the many placement programs available. Times and locations are available by contacting the Career Planning and Placement Center or referring to the monthly calendar mailed to each faculty member.

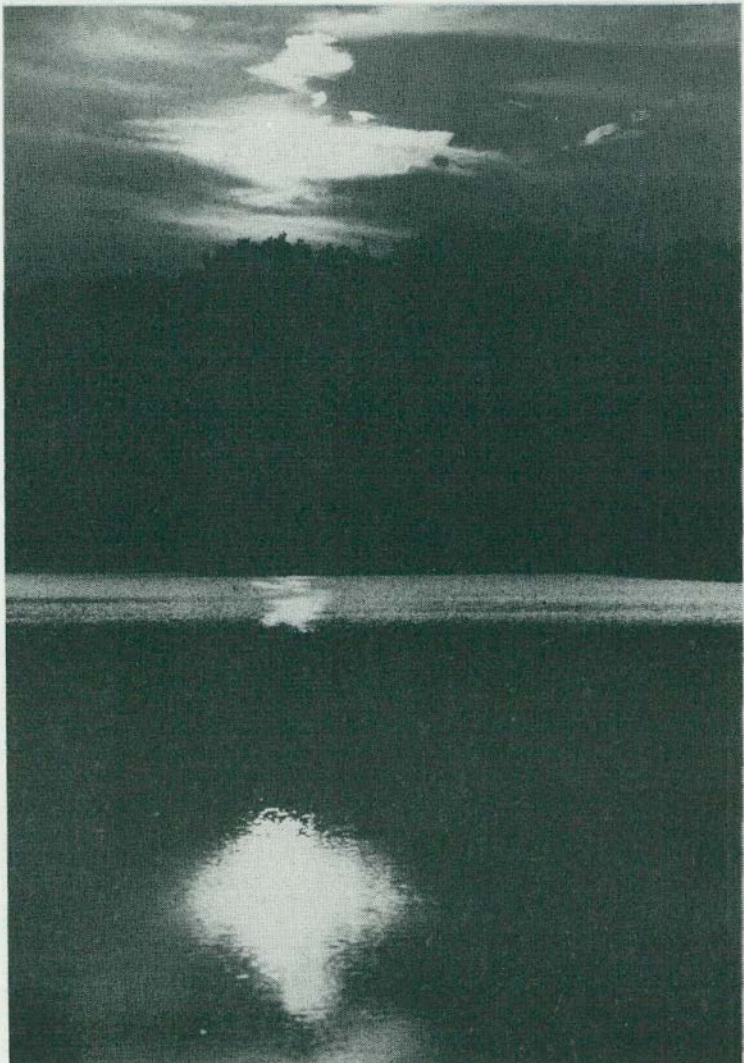
Future workshops will include Resume Writing, Interviewing, Job Search Skills, and How to Find a Teaching Position in a Difficult Job Market.

When students, staff or faculty need to use the Career Planning and Placement Center services, there is always a counselor available but we do segment the office responsibilities into different areas. If you are referring students you may wish to refer them in the following manner:

NEED	STAFF MEMBER	LOCATION
Career Planning	Dr. Joanne Burns	2nd floor
Business & Industry Placement	Ken Macek	2nd floor
Teacher Placement	Theo Hamilton	1st floor
Liberal Arts Placement	Dr. Joanne Burns	2nd floor
Student Employment	Don Boyd	1st floor
Off Campus Employment	Barbara Jones	1st floor
School Administration	Don Boyd	1st floor
Credentials	Joan McIntyre	1st floor
Higher Education Placement and Director's Office	Steve Kravinsky	1st floor

Visuals

by University Photographer
Dick Schwarze



This photograph of the Saline River was taken using a Nikon with a 80-200mm zoom lens. The Tri X ASA 400 film was exposed at 1/1000 sec. at f11.

Piano recital

(continued from page 4)

viola; Vicki Mayo, soprano; and Louise Woodruff, cello.

Some of the works Harrell will perform include Sonata Prima and Sonata Seconda by Viviana, Vaga Cintia by A. Scarlatti, Concertino in E Flat by Albrechtsberger, Animal Ditties by Plog and Sonate pour Trompette Chromatique et Piano by Hubeau.

Harrell is a student of EMU Associate Professor Carter Eggers. His recital is free and open to the public.

Wallace

(continued from page 2)

and recommend improvements; design and implement new systems for departments and prepare documentation; and maintain records of completed projects for statistical review.

His appointment is effective immediately.

Gifts

(continued from page 3)

accepted. The gift will be used to establish a \$10,000 endowed scholarship at Eastern for Chicano students.

Eastern's Board of Regents also accepted a \$1,000 gift from the Burroughs Corp. Great Lakes Educational Branch. The gift will be used to provide a scholarship to an EMU junior majoring in Operations Research and Information Systems.

The EMU Regents also accepted a gift-in-kind of kitchen equipment and cabinetry from the Michigan Consolidated Gas Co. to be used in the Home Economics Department. The estimated cost of the donation was \$4,000.

7 faculty

(continued from page 2)

the school of business at Kentucky State University for two years.

McEnery earned her bachelor's degree from Marquette University in 1972, a master's degree from Northern Illinois University in 1974 and is a candidate for a doctorate from Wayne State University. From 1977 to 1979, she taught at Wayne State University and since 1979 has worked for Michigan Bell Telephone Co. as a staff manager of personnel.

Chan earned her bachelor's degree from the University of Michigan-Dearborn in 1972 and a master's degree from the U-M in 1973. She holds a second master's degree in business administration from EMU. Chan has taught as a visiting lecturer at EMU and worked as a college graduate trainee in the Materials Control Department of Ford Motor Co.'s Michigan Truck Plant prior to her EMU appointment.

Carolyn De Loach was appointed associate professor in the Department of Nursing Education. She earned her bachelor's degree from the University of Southwestern Louisiana in 1965, a master's degree from the University of Alabama in 1970 and is a doctoral student at the University of Michigan. Since 1974, De Loach has been an assistant professor at the U-M. From 1972 to 1974, she served as an assistant professor at Arkansas State University.

All of the new EMU faculty appointments were effective Aug. 27.

CER

Reports from the NAEP

The increasing concern over public expenditures and accountability in education, combined with chronic worries over whether today's children are learning as much as yesterday's, is the impetus behind a growing series of reports that fills one shelf of the library's U.S. government documents collection (3rd floor). These are the result of the National Assessment of Educational Progress (NAEP) which, for more than ten years, has been measuring the knowledge of young Americans in ten areas of reading, writing, social studies, math, science, literature, music, art and career development. Each assessment test is given to a national sample of 100,000 people in four age groups -- ages 9, 13, 17 and 26-35.

The results of the assessments often make headlines -- sometimes encouraging, sometimes alarming. The first math assessment, for example, revealed that only 1 percent of 17-year-olds could balance a checkbook and less than half could determine the most economical size of a product. Over the decade, the NAEP reports have revealed many

differences in educational attainment at different times and among different categories of young people.

Copies of many of the reports of the NAEP are available in the documents collection under HE 19.312. They also are included in the ERIC microfiche collection in the Education and Psychology Division (2nd floor). The following are some of the report titles:

- "Three National Assessments of Science: Changes in Achievement, 1976-77"
- "Checkup, A National Assessment of Health Awareness Among 17-year-olds and Young Adults"
- "Reading in America: A Perspective on Two Assessments"
- "Attitudes Toward Science"
- "Hispanic Student Achievement in Five Learning Areas: 1971-75"
- "Changes in Social Studies Performance, 1972-76"
- "Energy Knowledge and Attitudes, A National Assessment of Energy Awareness Among Young Adults"
- "Write/Rewrite: An Assessment of Revision Skills"
- "Changes in Mathematical Achievement, 1973-78"

Openings

Clerical/Secretarial

Rescinded Posting (from Aug. 26, 1980 Special Posting):

The Administrative Secretary, CS-06, position in Financial Aid has been rescinded and will be reposted at a later date.

Administrative/Professional/Technical

AP-06 - AP-08* - Programmer/Analyst - University Computing-Deadline date: Oct. 10, 1980

*Salary grade will be dependent upon assignment and qualifications.

Re-opened Search:

- AP-07 - \$589.17-\$809.27 - (55% FTE) - Assistant Varsity Coach Men's Track - Intercollegiate Athletics Deadline date: Completed applications are requested by Sept. 16, 1980; however, the search shall remain open until the position is

filled.

Internal applicants for the above Administrative/Professional/Technical positions should submit a Promotional Openings Application Form to the department in which the vacancy exists.

An Affirmative Action/Equal Opportunity Employer and Educational Institution

Publications

Neal M. Belitsky, manager of University apartments, recently had an article published in the Journal of College Student Personnel titled "An Approach to Influencing the Physical Environment on Campus." The article reflects work done at Eastern.

Sports

Saturday Football: EMU at Bowling Green

Probable Starting Lineups

EMU Offense			BG Defense		
TE	80	Greg David (6-1,205,Sr.)	WE	90	Tim Ross (6-5,215,Sr.)
RT	53	Hershel Martin (6-6½,270,Jr.)	WT	96	Rick Iverson (6-3,240,Jr.)
RG	60	Percy Stamps (6-1½,243,Jr.)	NT	91	Craig Valentine (6-0,210,Jr.)
C	69	Manny Rodriguez (6-1½,234,Sr.)	ST	70	Todd Gates (6-4,257,Sr.)
LG	61	Jerry Carmack (6-3,231,Jr.)	SE	59	Andre Young (6-1,207,So.)
LT	62	Mike Williams (6-3½,255,Sr.)	WLB	92	Mike Bixel (6-2,215,Jr.)
SE	23	Jeff Dackin (6-2,190,Jr.)	SLB	58	Doug Carr (6-4,210,Jr.)
QB	9	Scott Davis (6-4,204,Jr.)	WC	26	Carl Rosser (6-0,200,Sr.)
HB	13	Albert Williams (5-6½,181,Sr.)	WS	23	Jim Rusher (5-8,163,So.)
HB	6	Steve Knudson (6-0,193,Sr.)	SS	9	Joe Moton (6-1,180,So.)
FB	35	Tom Wing (6-2,218,Jr.)	SC	45	Lee Williams (6-0,175,So.)
EMU Defense			BG Offense		
LOLB	41	Ken Banks (6-4,203,Sr.)	SE	25	Dan Shetler (5-11,178,Sr.)
LT	82	Mike Plungis (6-3½,242,Sr.)	LT	65	Mike Rullo (6-3,225,Sr.)
NG	51	Mike Hawks (5-11,206,So.)	LG	64	Cornell Jones (6-2,230,Jr.)
RT	71	Kahle Strickland (6-4,244,So.)	C	55	Mark Prchlik (6-1,230,Sr.)
ROLB	45	Joe Iliano (6-0,203,So.)	RG	67	Dean Hull (6-1,250,Sr.)
RLB	38	Dan Prueter (6-1,211,Sr.)	RT	77	Jim Schumann (6-1,240,Jr.)
LLB	44	Don Ishmael (6-2½,225,Sr.)	TE	87	John Park (6-2,237,Sr.)
LCB	7	Ken Miller (6-0,182,Sr.)	QB	16	Greg Taylor (6-1,175,So.)
RCB	12	Dave Smilo (6-1½,186,Sr.)	TB	31	Chip Otten (5-6,172,So.)
FS	39	Edwin Poole (6-2,185,Fr.)	FB	43	Tom Glendenning (6-1,203,So.)
SSS	49	Brian Cotton (6-2,199,Sr.)	FL	8	Shawn Potts (5-10,160,So.)

EMU-BG Game Facts: Kickoff Time - 1:30 p.m.; Location: Doyt L. Perry Field in Bowling Green Ohio (23,272); Special Events - Business and Industry Day; Radio Coverage: Huron Sports Network, WEMU-FM (89.1 mhz) and WPAG-FM (107.1 mhz); John Fountain and Paul Shoults on the broadcast.

Football

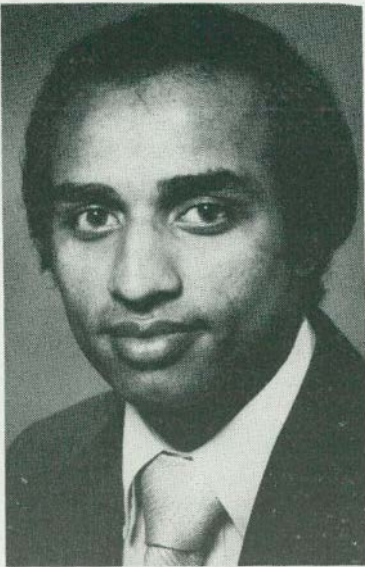
MEN'S Cross Country

Sept. 6 at Western L 0-37 Poole 5 2 0.0 7 Prueter 5 2 1.7 7 Sept. 6 EMU Open NTS

EMU Statistics from WMU-EMU Game				
Rushing				
Name	TC	Gain	Loss	Net
Williams	12	65	0	65
Wing	8	23	1	22
Clark	1	9	0	9
Adamle	4	8	3	5
Knudson	2	5	0	5
EMU Total	36	116	27	89
Opp Total	54	330	16	314
Passing				
Name	Att	Comp	Int	Yds
Davis	8	20	2	47
Lewis	1	1	0	13
Korte	0	3	0	0
McGuire	0	3	0	0
EMU Total	9	27	2	60
Opp Total	8	21	0	74
Receiving				
Name	Rec	Yds	Ave	
David	4	25	6.3	
Williams	2	3	1.5	
Roberts	1	13	13.0	
Dackin	1	11	11.0	
Wing	1	8	8.0	
EMU Total	9	60	6.7	
Opp Total	8	74	9.3	
Tackles				
Name	Solo	Asst.	Loss	Total
Ishmael	8	2	0-0	10
Cotton	5	3	1-1	8

University graduate named EMU's first soccer coach

Phil Ancheril was named the first varsity soccer coach at Eastern this fall. The 30-year-old Ancheril, a native of Kottayam, Kerala, India, is a 1976 graduate of EMU where he earned two varsity track letters and also completed on the club soccer team. Ancheril grew up in India and graduated from St. Thomas High School in 1966. He attended Baselius College in Kerala, India before moving to Canada to live with a brother. He enrolled in EMU in 1972 and was a middle distance runner for the Huron track team for two seasons. Ancheril earned his bachelor's degree in physical education in 1976 and a master's degree in physical education in 1978 from EMU.



Phil Ancheril

Regents appoint Richters as assistant volleyball coach

Mara S. Richters was appointed assistant women's volleyball coach at Eastern by the EMU Board of Regents at its regular monthly meeting Aug. 20. She replaces Lenora Lee, who was promoted to head volleyball coach earlier this year. Richters, a 23-year-old native of Detroit, attended Livonia Stevenson High School, Kellogg Community College and the University of Alabama. She earned a Bachelor of Science degree in physical education, with an emphasis on coaching, from Alabama earlier this year. While in college, Richters received several honors for her volleyball skills, including selection as a Junior College All-American and to the Alabama All-State, All-Region and All-Tournament teams. Also, she served as assistant coach at the



Mara Richters

University of Alabama. Her appointment is effective immediately.

Assistant women's basketball coach appointed by Regents

Katy Brady was appointed assistant women's basketball coach at Eastern by the EMU Board of Regents at its regular monthly meeting Aug. 20. She will assist fifth-year Head Coach Kathy Hart and perform the duties that she assumed for the 1979-80 season when former Assistant Coach Sandra Andresen left the University. Brady, 24, is a 1974 graduate of Traverse City St. Francis High School. She earned a Bachelor of Science degree in physical education from the University of Michigan in 1978. Her coaching experience includes work with the softball and basketball teams at Stockbridge High School as well as with the EMU team. She is an Ypsilanti resident. Her appointment is effective immediately.



Katy Brady

WEMU

	mon	tue	wed	thur	fri	sat	sun
5:30	Jazz Scope	Jazz Scope	Jazz Scope	Jazz Scope	Jazz Scope	Jazz Scope	Jazz Scope
6:00	Morning Edition	Morning Edition	Morning Edition	Morning Edition	Morning Edition		
9:00	Jazz Scope	Jazz Scope	Jazz Scope	Jazz Scope	Jazz Scope	Big Band Spectacular	Sunday Best
11:00	Special	Masterpiece Radio Theater	Eleventh Hour	Marketplace	National Town Meeting	It Sounded Like This	Marian McPartland Piano Jazz
11:30				Insight		Jazz Revisited	
Noon	News & Sports	News & Sports	News & Sports	News & Sports	News & Sports	Jazz Scope	Mail Order Jazz
12:30	Radio Magazine	Radio Magazine	Radio Magazine	Radio Magazine	Radio Magazine	Mike Stock Show EMU F'ball	
1:00	Jazz Scope	Jazz Scope	Jazz Scope	Jazz Scope	Jazz Scope		Sunday Afternoon Blues
4:30	What's New	What's New	What's New	What's New	What's New		
5:00	News & Sports	News & Sports	News & Sports	News & Sports	News & Sports	Cypress Avenue	Just Country
6:00	Jazz Datebook	Jazz Datebook	Jazz Datebook	Jazz Datebook	Jazz Datebook		
6:30	Cafe du Jazz	Cafe du Jazz	Cafe du Jazz	Cafe du Jazz	Cafe du Jazz	Jazz Scope	Folk Festival
7:00	Spider's Web	Spider's Web	Spider's Web	Spider's Web	Spider's Web		
7:30	Nuestro Mundo Hispano	Options in Education	Options in Education	Market-Place			
8:00		Energy & Water	Horizons	Insight		Tom Fagan Show Ypsilanti High School Football	All Things Considered
9:00	All Things Considered	All Things Considered	All Things Considered	All Things Considered	All Things Considered		Jazz Alive
1:00	Jazz Scope	Jazz Scope	Jazz Scope	Jazz Scope	Jazz Scope	New Directions	New Directions

Program Highlights Sept. 9 - 15

OPTIONS IN EDUCATION - Tuesday, Sept. 9, 7 p.m. and Wednesday, Sept. 10, 7 p.m. - "Learning about Labor," a two-part program examining the reasons little attention is given to organized labor in our schools. ENERGY AND THE WAY WE LIVE - Tuesday, Sept. 9, 7:30 p.m. - "Kicking the Oil Habit." HORIZONS - Wednesday, Sept. 10, 7:30 p.m. - "Growing Old in California: Life, Not Death in Venice." A group of aging citizens in Venice, California contrasts life there with the Eastern European world of artists Chagall and Beshevis Singer. MORNING EDITION - Wednesday, Sept. 10, 6-9 a.m. - The Federated Garden Clubs of Michigan, Inc., begins a series of weekly segments on the Wednesday Morning Edition. Today's topic is "How To Make a Spice Wreath," an unusual fall decoration. WOMEN IN JAZZ - Friday, Sept. 12, 10:05 a.m. - "Bessie Smith." CYPRESS AVENUE - Saturday, Sept. 13, 5 p.m. - "Popular Music Survey." Sunday Best - Sunday, Sept. 14, 8:05 a.m. - Duke Ellington's Carnegie Hall Concert, 1944. MARIAN MCPARTLAND'S PIANO JAZZ - Sunday, Sept. 14, 11 a.m. - Chick Corea.

Football

EMU FOOTBALL - Saturday, Sept. 13, 1:30 p.m. - The Hurons vs. Bowling Green. The Mike Stock Show airs at 1 p.m. John Fountain and Paul Schultz are hosts. YPSILANTI HIGH FOOTBALL - Saturday, Sept. 13, 7:30 p.m. - The Braves play Detroit Catholic Central in Detroit. The Tom Fagan Show airs at 7:15 p.m. Sam Eiler is host, assisted by Steve Henegesbaugh.

Events of the Week

TUESDAY

9

MEETING—UAW Local 1975 Grievance Committee, Conf. Room A, McKenny, 12:30 p.m.
MEETING—Student Government, Alumni Lounge, McKenny, 7 p.m.

WEDNESDAY

10

Wednesday, Sept. 10
MEETING—College of Education, Gallery I, McKenny, 1 p.m.

THURSDAY

11

THEATER—EMU Brown Bag Theater, Quirk Lounge, 12:15 p.m.
MEETING—Community Education Advisory Committee, Huron Room, McKenny, 1:15 p.m.

MEETING—Campus Action, Faculty Lounge, McKenny, 7 p.m.
FILM—Campus Life Council Cinema, "The Life of Brian," one of the most controversial Monty Python films, Strong Aud., 8 p.m. Admission: \$1.75.

FRIDAY

12

CONFERENCE—The Michigan Occupational Therapy Association, annual fall meeting today and tomorrow, Hoyt Conf. Center, all day.

ORIENTATION—Social work field in-

structor's orientation, Tower Room, McKenny, 9 a.m.

FIELD HOCKEY—Women's team vs. Northern Michigan University, Bowen Field House, 1 p.m.

TEA—Women's Association, President's residence, 3 p.m.

CONCERT—Office of Campus Life outdoor concert, library hill, 8 p.m.

FILM—CLC Cinema, "Time After Time," starring Malcolm McDowell, David Warner and Mary Steenburger. Traces relationship between H.G. Wells and Jack the Ripper. Strong Aud., 8 p.m. Admission: \$1.75.

VOLLEYBALL—Women's team, annual Green and White Meet, Warner Gymnasium.

SATURDAY

13

BICYCLE RACE—The first WEMU Pedal Pusher Classic bicycle touring race, Huron River Drive near Hoyt Conf. Center, 8 a.m. To register, call WEMU at 487-2229.

ART EXHIBIT—Paintings by EMU student

Debbie Snider, Intermedia Gallery, McKenny, 8 a.m. to 5 p.m., weekdays.

FIELD HOCKEY—Women's team vs. Indiana State University, Bowen Field House, 9 a.m.

VOLLEYBALL—Women's team vs. Indiana State University, Warner Gymnasium, 11 a.m.

CROSS COUNTRY—Men's team vs. Northern Illinois University, Dekalb, Ill., 11 a.m.

FOCUS EMU

The deadline for copy is 5 p.m. Tuesday before the issue in which it is to appear, unless otherwise noted.

FOCUS EMU is published for faculty and staff every Tuesday during the fall and winter semesters and semi-monthly on Tuesdays during the spring and summer by the Office of Information Services. Editorial Offices: second floor, Snow Health Center, 487-4400.

Kathleen D. Timney, director of the Office of Information Services; Andrew J. Chapelle, news editor; Marlene K. Davenport, information specialist; Richard R. Schwarze, staff photographer.

CROSS COUNTRY—Women's team vs. Central Michigan University, Mt. Pleasant, 11 a.m.

FOOTBALL—Hurons vs. Bowling Green State University, Bowling Green, Ohio, 1:30 p.m.

CONCERT—Ann Arbor Chamber Music Association, Pease Aud., 7 p.m.

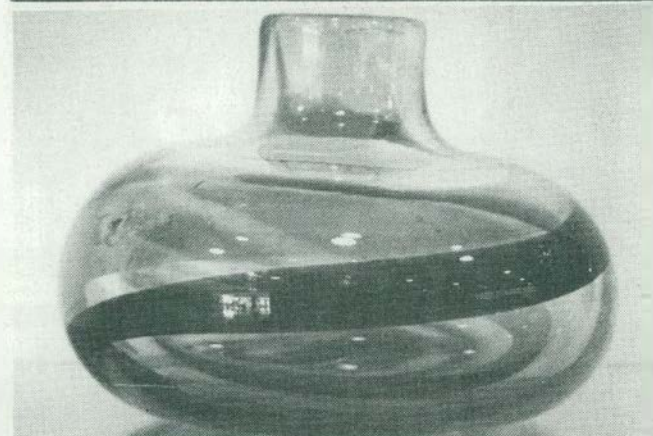
FILM—CLC Cinema, "A Clockwork Orange" by Stanley Kubrick, Strong Aud., 8 p.m. Admission: \$1.75.



FOCUS EMU

Produced by the Office of Information Services

Vol. 26 No. 6 Sept. 9, 1980



Works by Frederick Birkhill, president of the Michigan Glass Guild, continue on exhibit through Sept. 29 in the lobby of the Center of Educational Resources. The exhibit, which includes this work, features glass sculpture, blown glass and stained glass. Birkhill is a 1974 graduate of EMU.



You can be a pedal pusher too! WEMU's bicycle race is detailed on page 1.

The Regents approved the appointment of three acting department heads at its August meeting. See page 1.

A computer will play matchmaker and University commuters will benefit. An article about a new ridesharing program appears on page 5.

Newsline 487-2460

Sportsline 487-3279