



Volume 32, Number 30  
March 18, 1986

# FOCUS EMU

Produced by  
Public Information  
and Publications



## Madrigals to perform at Kerrytown

Eastern's Madrigal Singers will perform in the Kerrytown Concert Hall, 415 N. Fourth Ave. in Ann Arbor, Saturday, March 22, at 8 p.m.

Dressed in Renaissance costumes, the singers will perform under the direction of EMU Professor of Music Emily Lowe. Their program will include 16th century madrigals by Gesualdo, Monteverdi, Schutz, Maheit, Morley, Farmer and others as well as later works from Debussy, Spencer and

Nelybel.

The Madrigal Singers are preparing for a concert tour of the People's Republic of China, Taiwan and Hong Kong in May.

Since 1965, the singers have traveled throughout the United States and Europe where they have received consistently great reviews. Twice they won awards at the Cork, Ireland, International Choral Festival and last summer they appeared at the National Concert Hall in Dublin.

In England, they have ap-

peared at London University, Cambridge University, Warwick University, Kent University and in leading cathedrals and festivals, including the Chelmsford Festival in May 1985.

Tickets for the Kerrytown concert are priced at \$8 and \$5 for senior citizens and students.

A reception will follow the concert, courtesy of Zingerman's.

For ticket reservations, call Kerrytown Concert Hall at 769-2999.

## 6th Undergraduate Symposium to showcase student work

Eastern's College of Arts and Sciences will sponsor its sixth annual undergraduate symposium Friday, March 21, from 9 to 11:45 a.m. in McKenny Union.

The event, titled "Symposium VI: The Recognition of Excellence in Undergraduate Creativity and Research," will showcase outstanding research work by students from 18 programs and academic departments at EMU.

This year's undergraduate symposium will showcase 38 presentations which represent the best of those works submitted by students to individual departments. Each student is sponsored by a faculty member, who has had some degree of input into the project's completion.

Some of the presentations in Session A, scheduled for 9 to 10:35 a.m., include "The Effects of Self-Esteem on Dialect Acquisition," by Lorrie Bufford; "The Trickster: Mythological Archetype in Twentieth Century Culture," by Chris Piazzi; "Tests of Conditioned Tolerance for Alcohol," by Nora Hawkins and "Perspectives on the Black Family," by Sheila Smith.

Presentations scheduled for Session B, from 10:45 to 11:45

a.m. include "The Selling of Downtown U.S.A.," by Kelly Cords; "A Geographic Analysis of Major College Football in the Midwest," by Thomas W. Elliott; "The Law of Search and Seizures: Detention and Searches at Airports," by David A. Monroe and "Credit Card Fraud: The Response of the Legal System to an Emerging Problem," by Michael J. Radzik.

Following the presentations, a luncheon will be held at noon, in honor of the students and faculty sponsors who participated in the symposium. Dr. Donald F. Drummond, dean of the College of Arts and Sciences, will preside over the luncheon and Dr. O. Bertrand Ramsay, professor of chemistry, will speak on "Dreams and Visions: The Role of Imagination in Scientific Research."

All symposium activities are open to the public, although advance luncheon reservations are required. Admittance to all presentations is free of charge.

For more information, contact Dr. Herbert Caswell Jr., chairman of the Undergraduate Symposium Planning Committee at 7-4242.

## Campus Capsules

### Michigan Rep. Gary Owen To Speak Here March 21

Michigan Representative and Speaker of the House Gary Owen will speak here Friday, March 21, at 11 a.m. McKenny Union's Guild Hall.

Owen, who represents EMU's home district, will talk on "State Issues Affecting Eastern Michigan University."

Owen's presentation is free and open to the public.

### Spring Wildflower Talk Planned At Ypsilanti Library

"An Annual Spring Wildflower Pilgrimage in the Smoky Mountains" will be described by Bob and Judy Kelly at a program planned for 8 p.m. on Tuesday, March 18, at the Ypsilanti District Library, 229 W. Michigan Ave.

Bob Kelly is an EMU alumnus.

The talk on wildflowers will be a highlight of the spring activities for adults at the library. The public is invited, and admission is free. Refreshments will be served. For more information, phone 482-4110.

### Author Daniel Cutler To Speak on Bible Cookbook

Ann Arbor Author Daniel Cutler, who wrote *The Bible Cookbook: Lore of Food in Biblical Times Plus Modern Adaptations of Ancient Recipes*, will speak at the Peters Branch of the Ypsilanti District Library. The program is scheduled for 11 a.m. on Saturday, March 22. The public is invited, and admission is free. Refreshments, based on recipes from the cookbook, will be served.

The branch library is located at 1165 Ecorse Rd., and the phone number is 482-5025.

### Handicapper Awareness Films To Be Offered

Sondra Berlin, member of the Michigan Civil Rights Commission, will speak as part of EMU's Handicapper Awareness Day activities Wednesday, March 19 in the Alumni Room of McKenny Union. Berlin's speech will follow the presentation of two films beginning at 1 p.m. titled "Just Call Me Mermaid" and "The Different Approach."

A reception will be held following Berlin's speech.

The films, presentation and reception are free and open to the public.

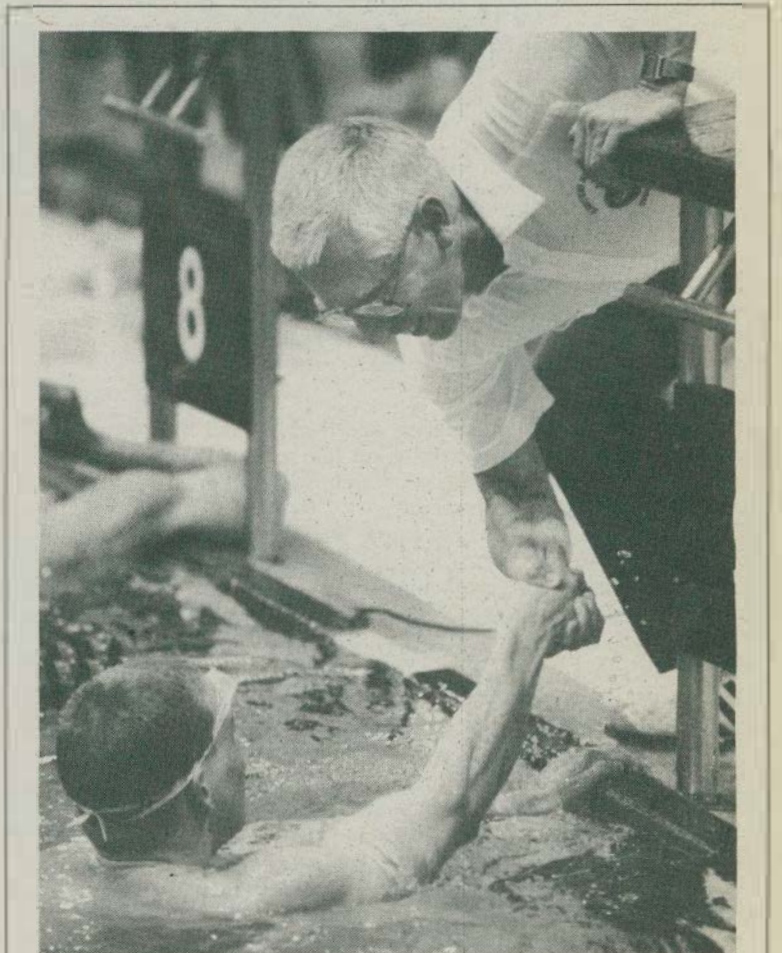
### Career Services Center Offers Planning Workshops

The Career Services Center will offer an Introduction to Career Planning on Monday, March 24, Tuesday, March 25, and Thursday March 27, all at 2 p.m. The workshop also will be offered Tuesday, March 25 at 11 a.m. A workshop titled "Removing Barriers to Goals Achievements" will be offered Wednesday, March 26 at 2 p.m. For more information and to register, call 7-0400.

### 'Salute To Europe' Program Planned By Foreign Student Office

A "Salute to Europe" will be held on Monday, March 24 from 3 to 5 p.m. in the Reception Room, McKenny Union. Slides, music, dances and displays will be featured for anyone interested in the cultures of Europe.

The program is sponsored by the Office of Foreign Student Affairs, the International Student Association and the Hellenic Student Association. For more information, please contact Ann or Roberta in the Office of Foreign Student Affairs at 7-3116.



Coach Mike Jones congratulates one of his winning swimmers.

## Swimmers destroy MAC records

The 34th Annual Mid-American Conference men's swimming and diving championships turned into a record-wrecking session for the home EMU squad as the Hurons won 12 of the 18 events on the way to an unprecedented seventh consecutive league championship.

Coach Mike Jones' squad hosted the three-day championships March 6-8 in the Olds/IM Pool on the EMU campus but the Hurons were anything but a

congenial host on the way to the title.

Eastern piled up a MAC record 781 points and also set a league mark for winning margin with a 230.5 point advantage over second place Miami at 550.5. Ohio University finished in third with 355.5 points followed by Bowling Green with 341.5, Kent State 312.5, Ball State 304, Toledo 193 and Northern Illinois 187.

## Focus on Staff



Helen Burnstad

### Burnstad combines teaching, communication skills at Staff Training and Development

When people genuinely like their jobs and feel comfortable doing them, their enthusiasm rubs off on their co-workers and the whole office benefits. Dr. Helen M. Burnstad exhibits this kind of contagious enthusiasm, and in her case, the entire University benefits.

As acting director of staff training and development, Burnstad has day-to-day contact with all segments of the University population. Through various workshops and consultations, she shares her communication skills with office personnel, groundskeepers, food service workers, supervisors, managers, faculty members and high-level administrators. Her job is to make this diverse group feel better about itself, more confident and therefore more productive.

"The main function of our office is to encourage employees to be mobile, alive, alert and make them want to grow," Burnstad said. Employees have the opportunity to grow through seminars and workshops offered throughout the year in a variety of categories including "Getting to Know EMU," "Management and Office Management," "Personal Growth and Development," and "Program Design and Delivery."

The Staff Training and Development Office also offers an employee film series, consultation services, and is building a resource library.

"We have had the best response to the 'Getting to Know EMU' sessions," Burnstad said. Another popular workshop is "Healthy Combinations," which is offered in conjunction with Snow Health Center and the Recreation/Intramural Department.

"Healthy Combinations," Eastern's total wellness program, was recognized recently in the *Chronicle of Higher Education* in an article that outlined what several colleges and universities are doing to help their staffs live better lives.

While some programs, like "Healthy Combinations," enjoy immediate success, others take some time getting off the ground, according to Burnstad. "The workshop we offer on financial planning for single parents just hasn't caught on, and I know there are a lot of single parents out there that could use the help," she said.

The financial planning workshops are offered by an off-campus professional but many others are taught by EMU faculty and staff. Burnstad has found a lot of University-wide support in locating workshop presenters. In fact, she has only been turned down once in her efforts to plan more than 60 workshops.

Workshop offerings are based on a needs assessment conducted early in the program's planning stages. Approximately 150 individuals from across campus were interviewed about topics they would like to see covered. Also, the training and development staff looked at the Quality of Work Life questionnaire administered in March, 1985 to identify areas where employees felt they needed help.

Burnstad is now exploring a certificate program for those who strive to be managers. "A lot of people here are promoted because they are good at what they were doing. Now, suddenly they're a manager, but may not have 'management' skills," she

said. Burnstad also would like to see more offerings for faculty members and adult learners.

A Wyoming native, Burnstad joined the staff here in January 1985 as staff training and development associate. When her boss, Ken Handwerger, left in May, Burnstad stepped in as acting director, and has seen the program expand since then. Her previous experience as a teacher and in communications has proven to be a perfect combination for her current career choice. "I like to teach, so I enjoy giving the workshops. I also like working with people, and I have the opportunity here to work with all types," she said.

Burnstad received her bachelor's degree in speech at Colorado State College in 1963. She earned her master's degree in speech communication from the University of Northern Colorado in 1970 and her doctorate in education from the University of Arkansas in 1982.

Working for a "good mentor" got Burnstad pointed in the staff training direction. "The president at the junior college where I taught was interested in staff training and 'tapped' me to get the program going," she said. When Burnstad pursued her doctorate in higher education, she concentrated on adult education in the community college setting.

Burnstad feels her job here combines the best of both worlds because she uses her communication and teaching skills. "I'm offering a service to the people here at EMU, and that's what I like to do."

—By Nancy Mida

## Research

### Spring and Fall Released Time Appointments Available

Released time appointments for the 1986 spring semester and the 1986 fall semester are available to faculty members for developing proposals for external funding of research, program development or creative projects that will have an impact upon the educational and research missions of the University.

Preference will be given to applications that meet one or more of the following criteria:

1. are from faculty that have never submitted an external proposal;
2. are from faculty that have not recently received a released time award;
3. propose interdisciplinary or institution-wide projects;
4. are revisions of earlier proposals that were not funded initially but have the potential for funding; and
5. propose new initiatives

Applications for both programs are due in the Office of Research Development by Monday, March 31. For application forms and further information, call ORD at 7-3090.

### Supercomputer Time

The National Science Foundation and the National Institutes of Health have announced a new program that will award up to 25 hours of supercomputer time for research by behavioral, social, biomedical and economic scientists.

The program is designed to promote the exploratory use of supercomputers by researchers in these fields, including researchers with little or no experience on supercomputers. Time will be available on supercomputers at eight locations around the United States.

Applications are due Friday, April 18. Contact Rick Howard at 7-3090 for details

### 1986 State Research Fund

The Michigan Department of Commerce will accept proposals on any new, innovative and not readily available product or process that is based upon new technology or will improve existing technology, such as: hazardous waste management, advanced manufacturing technologies, biomedical technologies and molecular biology. Michigan colleges and universities are eligible to apply for funding only if they submit an application in cooperation with a business or other private entity.

The deadline for receipt of applications is Monday, June 30. Contact Cheryl Kozell at 7-3090 for guidelines and application forms.

### Deadline Extended

The U.S. Department of Education has extended the closing date for applications for the 1986 Law-Related Education Program. Proposals are now due on Monday, April 7 instead of March 7, as originally announced.

## Adviser

Academic Advising Center  
229 Pierce Hall  
Hotline: 7-3344

### Early Advising/Registration for Fall 1986

Faculty and staff may find more students seeking advising this year than previously. At least, we hope so.

In order to provide timely data for institutional planning and improve student retention, the administration is strongly encouraging current students to enroll for the fall, 1986 semester during the March - April advance registration period. A letter outlining the advantages of early registration and enclosing a personalized "Student Data Form" is being sent by each academic department to currently enrolled majors. Each student is being encouraged to bring the form to the academic department for a meeting with a faculty adviser prior to registration. The Academic Advising Center is contacting all undeclared students and others assigned to the Center.

In addition, members of the AAC staff are meeting with student groups across campus to encourage early advising and registration — enrollment of 65 percent of the currently enrolled students by Wednesday, April 30 is our goal!

Students may reserve their fall classes for only \$20 now with nothing further due until July, 1986. Payment of past-due obligations also may be delayed until July. Early advising and registration will save the students and faculty some later override hassles and will provide earlier data on class section needs.

Please encourage students to take advantage of this opportunity.

### Withdrawal Deadline

Friday, March 21 is the last day for students to withdraw from an individual class and receive an automatic "W."

FOCUS EMU is published weekly during the fall and winter semesters for faculty and staff at Eastern Michigan University. The deadline for copy is 5 p.m. Tuesdays for the next week's issue.

Kathleen D. Tinney, director,  
Public Information  
and Publications  
Susan Bairley, manager, news and  
editorial services  
Nancy J. Mida, FOCUS EMU  
editor  
Dick Schwarze, photographer

### Accounting students to host business seminar

A professional business seminar will be hosted by EMU's Beta Alpha Psi and the Accounting Club Saturday, March 22, from 8:45 a.m. to 4 p.m. in the Alumni Lounge of McKenny Union.

This year's seminar theme is "How the Financial Decision Makers Use the Information That We, As Accountants, Provide."

Featured speakers for the seminar will include Nick Tannis, account executive at E.F. Hutton and Associates; Gary Allen, administrator of cost estimation and pricing at General Motors Hydramatic Division and Charlie Schook, director of loan administration in the Corporate Banking Department of Comerica Bank in Detroit.

In addition, an appraisal of current accounting strengths and weaknesses from the perspective of the Financial Accounting Standards Board and the accounting community will be presented by Dr. S. Thomas A. Cianciolo, professor in the Department of Accounting and Finance here.

The cost for the seminar is \$4 per person and will include a buffet luncheon and refreshments.

For more information, contact Bob Fitzgerald at 7-5490.

## Ten female faculty receive Keal awards

Ten female faculty members at EMU were selected as recipients of the Josephine Nevins Keal Endowment Awards for the 1985 fall semester.

The awards, made twice each year here, are given to female faculty members in the name of Keal, a 1901 graduate of the University. Funds from Keal's \$50,000 endowment to the University have been earmarked "to be used by the University to augment the income of female faculty members and to assist them in advancing their professional competence and rank through study and research."

Award recipients are named by a designated committee, which reviews all applications received and evaluates them for original research; publications and instructional material development; dissemination of scholarly endeavors through presentations at professional conferences; enhancement of professional competence through attendance at national and international conferences or workshops; and professional development through coursework toward advanced degrees.

Awards are then made through EMU's Women's Commission.

The 10 fall semester recipients were:

—**Dr. Irene A. Allen**, professor of teacher education, who received \$250 to support travel to present research on reading at national conferences. She planned to attend four conferences during the year.

—**Dr. Eileen M. Carr**, assistant professor of teacher education, who received \$150 to support continued research dealing with the development of vocabulary strategies.

—**Deborah deLaski-Smith**, assistant professor of Human, Environmental and Consumer Resources, who received \$225 to help conduct a needs assessment research survey to document the housing needs of the handicapped and elderly.

—**Dr. Marie Dellas and Louise F. Jernigan**, professors of teacher education-educational psychology, who received \$150 to analyze research data which assesses identity development at various ages.

—**Virginia Ghant**, assistant professor of nursing education, who received \$250 for travel and presentation of a paper at the 1985 Black Caucus of Health Workers of the American Public Health Association held last November.

—**Marie Immekus**, an assistant professor of occupational therapy, who received \$250 for dissemination of research at the American Occupational Therapy Association conference to be held next month.

—**Dr. Judy McKee**, professor of early childhood education, who received \$250 to assist in the publication of the 1986-87 edition of a reader in child development for Duskin Publishing Co.

—**Yvonne R. Teske**, associate professor of occupational therapy, who received \$150 to attend a workshop in Montreal, Canada, sponsored by the Hospital and Community Psychiatry Association on "The Mental Health Continuum: Challenging Models."

—**Majorie Ziefert**, assistant professor of social work, who received \$250 to travel and make a presentation at the 1986 National Association of Social Workers Conference on Women's Issues in May.

## WEMU 89.1

### Highlights

#### TUESDAY, MARCH 18

12:10 p.m. Afternoon Jazz Scope - Today's Classic Corner features music by Benny Carter.

5:10 p.m. Cafe du Jazz - Dinner-time music hosted by Bret Julyk.

8:30 p.m. Doc Savage - Radio adventure drama - "The Pagoda of Hands."

#### WEDNESDAY, MARCH 19

12:10 p.m. Afternoon Jazz Scope - Today's Classic Corner features music by Bill Evans.

8:30 p.m. Our Secret Sins - A comedy mystery based on the radio of the 1930-1940's and WWII.

11 p.m. Jazz in Profile - Features John Coltrane.

#### THURSDAY, MARCH 20

12:10 p.m. Afternoon Jazz Scope - Today's Classic Corner features music by Clifford Brown.

5:10 p.m. Cafe du Jazz - Music for your dinner hour hosted by Bret Julyk.

8:30 p.m. Fresh Air - Reverend William Sloane Coffin reflects on his role as a peace activist and spiritual leader.

#### FRIDAY, MARCH 21

12:10 p.m. Afternoon Jazz Scope - Today's Classic Corner features music by Muddy Waters.

8:30 p.m. Horizons - "Treaties: Right or Wrong."

9 p.m. The All-Star Rhythm Revue - Music hosted by Stan and Evie.

#### SATURDAY, MARCH 22

9 a.m. Big Band Spectacular - Host John Assenmacher will feature music by Benny Goodman.

6 p.m. A Prairie Home Companion - Garrison Keillor brings you the latest news from Lake Wobegon.

9 p.m. Third World Dance Party - Tom Simonian features a mix of reggae, calypso, highlife, juju, soukous, and more.

#### SUNDAY, MARCH 23

9 a.m. Sunday Best - Michael Jewett features Benny Goodman.

12 p.m. The Flea Market - Folk music.

2 p.m. A Prairie Home Companion - An encore presentation.

7 p.m. When the Sun Goes Down - Featuring Big Joe Turner

9 p.m. New Directions - Albin Curran's Maritime Rites featuring Accordionist Oliveros.

## WEMU to feature jazz talent at fundraiser

WEMU, in cooperation with the Apartment Lounge in Ann Arbor, will present the "Spring Extravaganza" benefit concert Thursday, March 20 in conjunction with WEMU's on-the-air fundraiser March 18 through 24.

WEMU's "Spring Extravaganza" will feature jazz talent from throughout Southeastern Michigan with six continuous hours of music from 8 p.m. to 2 a.m.

Scheduled to appear at the Apartment Lounge are: Jackson's Koke McKesson (winner of the 1985 WEMU Jazz Competition), Lansing's Betty Joplin (heard on the new Arthur Prysock LP "A Rockin' Good Way"), Detroit's Mische Braden (the Motor City's fine jazz vocalist and Michigan Satellite Records recording artist), and Ann Arbor's own Patty O'Connor (heard every weekend at the Earle). In addition, more than 25 of the best local jazz musicians will accompany these vocalists and participate in a two hour jam session from midnight to 2 a.m.

Tickets are \$10 general admission and are available at WEMU and the Apartment Lounge, which is located at 2200 Fuller Road in the Huron Towers Apartments, across from the V.A. Hospital in Ann Arbor.

There are a limited number of seats available for this concert. All proceeds benefit WEMU. For more information, call WEMU's Sandy Lake at 7-2229 or Rich Hedlund at the Apartment at 769-4060.

## E. Lorene Hall, emeritus professor, dies

E. Lorene Hall, associate emeritus professor at EMU, died recently. Hall taught in the Geography and Geology Department here from 1960 until she retired 1983.

During her tenure at Eastern, Hall was a member of Phi Kappa Phi; a past president of Delta Kappa Gamma; a member of EMU's Faculty Women's Club and the American Association of University Women. She co-authored a textbook on the geography of Michigan and was recognized by her colleagues for her excellent teaching methods.

Hall was born in 1917 in Hillsdale, Mich., and received her Bachelor of Science and Master of Arts Degrees from EMU. She was employed as a social worker with the Michigan Department of Social Services before joining the faculty here.

Contributions to establish a scholarship fund in Hall's name may be made to her family.



Joseph Gurt

## Gurt to perform with Ann Arbor Chamber Orchestra

EMU Music Professor Joseph Gurt will perform with the Ann Arbor Chamber Orchestra Wednesday, March 19, at 7:30 p.m. in the First Presbyterian Church, 600 N. Brady Road in Dearborn.

The concert is part of the Dearborn Bach festival and will include Bach's Third "Brandenburg" Concerto and Mozart's Piano Concerto in C Major K467, for which Gurt composed the cadenzas.

Gurt, a pianist, has been on

the faculty here since 1967. A Poland native, he grew up in Australia. He earned his bachelor's and master's degrees from the Juilliard School of Music in New York and has performed as a soloist in Australia, Israel and the United States including a Carnegie Recital Hall performance in 1973.

Tickets for the concert are \$5 each.

For more information, call 593-5590 during regular business hours or 336-7269 after 6 p.m.

## Openings

### CLERICAL/SECRETARIAL

(Minimum Biweekly Rate)

CS-04 - \$466.98 - Senior Account Clerk - Accounting/Accounts Receivable

Final date for the acceptance of internal applications for the above position is Tuesday, March 25.

### ADMINISTRATIVE/PROFESSIONAL/TECHNICAL

(Biweekly Salary Range)

AP-10 - \$1,040.55 - \$1,629.00 - Assistant Dean, Media and Instructional Support Services - Learning Resources and Technologies (University Library) - Deadline Date: March 25

AP-13 - \$1,526.62 - \$2,466.29 - Director, Publicity and Promotions - Publicity and Promotions - Deadline Date: March 25 (Internal bids should be directed to 310 King Hall)

Internal applicants for the above Clerical/Secretarial and Administrative/Professional/Technical positions should submit a Promotional Openings Application form to the department in which the vacancy exists, unless otherwise indicated.

### FACULTY

Learning Resources and Technologies - Tenure Track Faculty Position/Librarian (Access Services) - Fall Semester, 1986  
Deadline Date: March 25

**POSITION CANCELLATION: From FOCUS EMU (Jan. 7, 1986)**  
Foreign Language & Bilingual - Assistant Professor of Japanese

An Affirmative Action/Equal Opportunity Employer and Educational Institution

## EMU Theater to repeat adult drama

"Slow Dance on the Killing Ground" a gripping adult drama that unravels the tales of a trio of misfits, will be presented here Thursday through Saturday, March 20-22 in EMU's new Sponberg Theater.

Director Marvin Sims calls the play "expressionistic" in its approach to life and the human condition. This is captured in the set design as well as the costumes, both designed by students. "We have worked very closely together to capture the expressionistic genre in the production of this script. I found the issues still very relevant to our society even though the play was produced originally some 20 years ago," he said.

Tickets range from \$2.50 to \$5.50 and are available at the Quirk Theater Box Office. For more information or ticket reservations, call 7-1221 after 12:30 p.m. on weekdays.

# Sports

## Dan Gable To Speak At Dean Rockwell Roast

Former Olympic gold medal winner and 1984 Olympic wrestling coach Dan Gable will be the guest speaker at the Dean Rockwell Roast and Recognition Dinner Friday, March 21, at the Hoyt Conference Center.

The dinner will help to raise funds for the Rockwell Fund, a program designated to promote excellence in inter-collegiate and Olympic wrestling at EMU.

Rockwell, 73, graduated from Eastern Michigan (then Michigan State Normal College) in 1935. He was the U.S. Greco-Roman wrestling coach at the Tokyo Olympics in 1964, and has been elected to EMU's Hall of Fame (1977) and the Michigan Wrestling Hall of Fame (1978). He has been a long-time supporter of Eastern Michigan athletics, having served as the chairman of the EMU Alumni Track Scholarship Committee.

Gable, who now coaches at Iowa, won the gold medal in freestyle wrestling in the 1972 Olympics. On his way to the gold

Gable never gave up a single point to any of his opponents. He is considered by many to be the greatest wrestler the United States has ever produced.

Gable has also achieved considerable fame as a coach. His Iowa team has won an unprecedented eight consecutive NCAA championships as well as 10 consecutive Big Ten titles and a 66-0 Big Ten dual meet record. Under Gable's leadership, the United States dominated the 1984 Olympic wrestling competition, taking seven gold and two silver medals.

Other roasters at the dinner will include Steve Fraser, a Rockwell protege and the first American to win the Olympic gold medal in Greco-Roman wrestling.

The Master of Ceremonies will be former Ypsilanti mayor John Calder.

The dinner is at 7 p.m., with the program beginning at 8 p.m. Reservations can be made by contacting John Easley at 7-0395



Dan Gable

## Basketball Banquet Tonight at Hoyt

The EMU men's basketball team will be honored at the annual season-ending banquet tonight at Hoyt Conference Center.

The Basketball Booster Club is sponsoring the banquet with tickets priced at \$15 for a single ticket and \$25 per couple. Tickets are available at the EMU basketball office. Phone reservations can be made by calling 7-0464. The banquet will begin at 6 p.m. and a buffet dinner is slated to start at 7 p.m.

The basketball banquet will put the finishing touches on the 1985-86 season. Eastern finished with a 9-18 overall record and a 5-13 Mid American Conference record.

The EMU coaching staff will announce the season's Most Valuable Player as well as several other awards at the banquet.

## EMU Men Expand Future Basketball Schedules

Men's Athletic Director Paul Shouls has announced the addition of Michigan, Michigan State, Notre Dame and Minnesota to future EMU men's basketball schedules.

All of the additions to the schedule are road games with the exception of Michigan State. The Spartans have agreed to play at EMU's Bowen Field House on Dec. 17, 1987.

For the 1986-87 season, the Hurons will play in the Cutlass Classic at Michigan State on Nov. 28-29. EMU will join host Michigan State, Navy and Utica in the four-team Classic Field.

Other games slated for next season include a Dec. 4 date at Minnesota, a Dec. 11 game at Notre Dame and a Dec. 27 contest at the University of Detroit.

## Events of the Week March 18-24

### Tuesday 18

**WORKSHOP** — The Center for Instructional Computing will present a Lotus workshop for faculty, Room 215, Library, 9 a.m.

**MEETING** — The UAW Local 1975 Bargaining and Grievance Committee will meet, Gallery 1, McKenny Union, 12:30 p.m.

**WORKSHOP** — The Career Services Center will present a career planning workshop, Room 425, Goodison Hall, 2 p.m.

**MEETING** — The National Association of Black Accountants will meet, Faculty Room, McKenny Union, 6 p.m.

**MEETING** — The College of Education Alumni Governing Board will meet, Gallery 1, McKenny Union, 7 p.m.

**WORKSHOP** — The Instructional Support Center, in cooperation with Ypsilanti Adult Education, will present a speed reading workshop, Room 311, Library, 7:30 p.m.

**RECITAL** — The Music Department will present Donald Williams as part of its Organ Recital Series, Pease Auditorium, 8 p.m.

### Wednesday 19

**MEETING** — The membership of UAW Local 1976 will meet, Reception Room, McKenny Union, noon.

**SEMINAR** — The Office of Staff Training and Development will present a two-session workshop today and tomorrow, March 20, on general contract administration for UAW Locals 1975 and 1976. Preregistration is required, Founders Room, McKenny Union, 1:30 p.m.

**MEETING** — The College of Education Council will meet, Gallery 1, McKenny Union, 2 p.m.

**WORKSHOP** — The Instructional Support Center, in cooperation with University Adult Education, will present a workshop on memory skills, Room 311, Library, 3 p.m.

**MOVIE** — Campus Life's Silver Screen will present "Gremlins." Admission is \$1, Strong Auditorium, 7 and 9:30 p.m.

### Thursday 20

**MEETING** — The Institutional Planning Advisory Committee will meet, Tower Room, McKenny Union 8:30 a.m.

**WORKSHOP** — University Computing will present a workshop on converting from SPSS to SPSS-X, Room 221, Pray-Harold, 11 a.m.

**SEMINAR** — The Office of Staff Training and Development will present "Your Will and You." Preregistration is required, Room 201, King Hall, noon.

**WORKSHOP** — The Office of Staff Training and Development will present a workshop on reducing your vulnerability to sexual assault. Preregistration is required, Faculty Room, McKenny Union, 1 p.m.

**WORKSHOP** — The Center for Instructional Computing will present a workshop on computer aided instruction and authoring software for faculty members, Room 215, Library, 2 p.m.

**MEETING** — The University Council on Teacher Education will meet, Gallery 1, McKenny Union, 3:30 p.m.

**MOVIE** — Campus Life's Silver Screen will present "Gremlins." Admission is \$1, Strong Auditorium, 7 and 9:30 p.m.

**RECITAL** — The Music Department will present Hee Park's junior recital, Recital Hall, Alexander Music Building, 8 p.m.

**THEATER** — The Department of Communication and Theater Arts will present "Slow Dance on the Killing Ground." Tickets are priced at \$2.50 each, Sponberg Theater, 8 p.m.

### Friday 21

**MEETING** — The Basic Studies Committee will meet, Gallery 11, McKenny Union, 8 a.m.

**MEETING** — The University Marketing Committee will meet, Gallery 1, McKenny Union, 8 a.m.

**WORKSHOP** — The Office of Staff Training and Development will present a workshop on effective parenting skills. Preregistration is required, Main Lounge, McKenny Union, 9 a.m.

**MEETING** — The advisory board of the Center for Instructional Computing will meet, Room 215, Library, noon.

**MOVIE** — Campus Life's Silver Screen will present "Cocoon." Admission is \$1, Strong Auditorium, 7, 9:30 p.m. and midnight.

**THEATER** — The EMU Players will present William Hanley's "Slow Dance on the Killing Ground." Tickets for this adult drama are \$5.50, \$4.50 for EMU students and \$4 for Mainstage members, Sponberg Theater, 8 p.m.

### Saturday 22

**CONCERT** — The Department of Music will present Michael Ruszczynski's senior recital, Pease Auditorium, 7 p.m.

**MOVIE** — Campus Life's Silver Screen will present "Cocoon." Admission is \$1, Strong Auditorium, 7, 9:30 p.m. and midnight.

**THEATER** — The Department of Communication and Theater Arts will present "Slow Dance on the Killing Ground." For ticket-information or reservations, call 7-1221 after 12:30 p.m. weekdays, Sponberg Theater, 8 p.m.

### Sunday 23

**RECITAL** — The Music Department will present Peck-Suan Chan's junior recital, Recital Hall, Alexander Music Building, 3 p.m.

**MOVIE** — Campus Life's Silver Screen will present "Cocoon." Admission is \$1, Strong Auditorium, 7 and 9:30 p.m.

### Monday 24

**WORKSHOP** — The Center for Instructional Computing will present the last session of its three-part workshop on BASIC for faculty members, Room 215, Library, 9 a.m. and 1 p.m.

**WORKSHOP** — The Career Services Center will present a career planning workshop, Room 425, Goodison Hall, 2 p.m.

**RECITAL** — The Music Department will present Sane Hsu's senior recital, Recital Hall, Alexander Music Building, 8 p.m.