

Administrators

These are just a few of the many people who have served the University over the years in an administrative capacity.

Rita E. Abent

- Executive Director, University Marketing and Communications, 1996-99
- Director of University Marketing, 1994-96
- Director of University Marketing Media, 1985-89
- Director of Student Media 1979-85

As executive director of Marketing and Communications, Abent helped integrate a stronger marketing effort for Enrollment Services. Cooperation between the two divisions resulted in



Eastern Michigan's largest freshman class in its 150-year history for the fall 1999 semester. She developed a direct-marketing approach for University Admissions, established a video services department and initiated the University's first licensing program. During her tenure as director of Student Media, the Eastern Echo received 10 consecutive All-American ratings by the Associated Collegiate Press.

Morell Boone

- Dean (professor), Learning Resources and Technologies, 1986-present
- Adjunct Professor, Communication and Theatre Arts, 1988-91
- Director (professor), Center for Educational Resources, 1980-85

Boone was the chief program designer for the \$41-million Bruce T. Halle Library that was com-

pleted in June 1998. His guiding philosophy of providing information in all forms has helped make the Halle Library the standard by which other facilities are being measured internationally. "The Halle is a library for now and for the future," Boone said.

Albert W. Brown

- Head of Geography Department, 1958-60
- Dean of the College Arts and Sciences, 1960-65

Brown became the first Dean of the College of Arts and Sciences when it was created as part of the school's conversion to University status. He left after being appointed by Gov. George Romney to work with the Michigan Opportunity Office.

James M. "Bingo" Brown

- Dean of Men, 1927-1962

Once called "the heart and soul of Eastern Michigan University," "Bingo" Brown was the first Dean of Men. "His interest in the problems of students and efforts on their behalf has become practically a tradition here," the Normal College News wrote in 1949. Brown also was football and baseball coach (1923-1927), and a physical education instructor.

In the 1920s and 30s, he organized boxing tournaments on the campus, and students and townspeople flocked to the old gym near the water tower to watch.

The Brown Apartments, built in 1949, were named for him.

William E. Crouch, associate professor of Physical Education in 1965 when Brown died, said, "A visit to 'Bingo' was like a visit to a doctor. You felt better when you talked with him. He had more friends than any man I have ever known.

"He undoubtedly influenced more students than any other faculty member in the history of EMU."

Ursula Christian-Phillips

- ISIS User Consultant, 1996-97
- Special assistant to the provost for ISIS, 1989-96
- University's First Registrar, 1986-89
- Director of Registration, 1971-86
- Staff positions, 1957-71

Ursula Christian-Phillips had worked more than 40 years at Eastern Michigan University before retiring in 1997. She is known for laying the foundation for an advanced, integrated information system. She was



instrumental in getting the computerized student registration and records system, ISIS, which improved the registration process. She and her colleagues converted a quarter of a million records onto the then-new system. While on campus, she was actively involved with the Huron Valley Chapter of the EMU Alumni Association, the Women's Association, the Stoic Society, Kappa Delta Pi and the Golden Key National Honor Society.

Ronald W. Collins

- Provost and Vice President for Academic Affairs, 1983-present

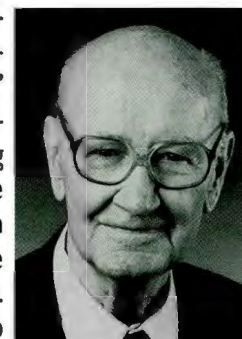
Collins was head of the Chemistry Department from 1977-80, then associate vice president for Academic Affairs before being named acting vice president for Academic Affairs in 1982. He was named permanent vice president for Academic Affairs in 1983.

Collins also was one of the first recipients of a Distinguished Faculty Award.

Ralph Cowan

- Admissions Counselor, 1969-96
- Military Science faculty, 1967-69

Called "the self-appointed vets counselor on campus," Ralph Cowan was involved in recruiting top students into the Eastern Michigan ROTC program. He served in the U.S. Army from 1941 to 1969. He came to Eastern Michigan in 1967 as an associate professor in military science to teach advanced courses for the ROTC program. Two years later, he retired from the army and remained at the University as an admissions counselor.



Walter DiMantova

- Director, Centers for Corporate Training, 1989-present

Under Walter DiMantova's leadership, the Centers for Corporate Training have been dedicated to increasing quality, productivity and reducing risks to organizations' physical, financial and human resources. The award-winning centers partner with businesses and industry to provide training, consulting, applied research and program development and evaluation. In May 1999, the centers, which include the Center for Quality, received the prestigious ISO 9002 registration, making Eastern Michigan the only accredited university program in the northern hemisphere to be certified. The Center for Quality also earned top ranking as the provider of training for the quality standard test used by automakers and their suppliers. DiMantova joined Eastern in 1986 as a consultant and lecturer.

Patrick J. Doyle

• Vice President, Business and Finance, 1994-present

Since starting at Eastern in 1979 as an accountant, Doyle helped steer the University through some difficult financial times. He did so through a variety of positions, including senior accountant (1980), assistant controller and manager of divisional budgets (1985), and assistant to the vice president for Business and Finance (1987). He has been lauded for refinancing initiatives that have resulted in considerable savings to the University.

Donald F. Drummond

• Dean of the College of Arts and Sciences, 1965-87
• Acting Vice President for Academic Affairs, 1977-79

Drummond came to Eastern Michigan in 1958 as head of the Department of History and Social Sciences. In 1965 he was named acting dean of the College of Arts and Sciences, and in 1966 was named dean.

During his tenure, the college grew from 12 to 18 departments and programs. He served under four presidents and two interim presidents. When Drummond retired in 1987, the regents, in addition to noting his service, praised the support of his wife, Betty, who they referred to as the "lady in lavender."

Anthony Evans

• Provost and Vice President for Academic Affairs, 1979-1982

In 1977, Evans was elevated from vice president and executive assistant to the president to executive vice president.

Evans left EMU in 1982 to become president of California State College at San Bernadino. He had served as acting president during the interim search

when James Brickley became lieutenant governor of Michigan. When Evans resigned, student body president Jerry Curtis said, "Evans is one of the most energetic and responsive (administrators) to the needs and concerns of the student body."

Evans was instrumental in involving the College of Education with programs to assist Third World countries in developing their educational systems.

Lynette Findley

• Director, Holman Learning Center, 1997-present

Findley joined Eastern Michigan as associate dean of Housing and Food Services. She was promoted to director of the King/Chavez/Parks College Days Program. Under her direction, minority programs grew to eight by 1989 under the umbrella Office of Equity Programs. In 1997, Findley and the Division of Enrollment Services proposed The Learning Center, in an effort to ensure the successful education and retention of students.



John Fountain

• Vice President for University Relations, 1983-85

Fountain held numerous positions in athletics and public information with the University. He started in 1966 as director of sports information, and also served as acting athletics director from 1974-85.

He began broadcasting Eastern Michigan University games in the 1960s, and in 1993 celebrated his 300th football game as the radio voice for EMU sports, an achievement unmatched by anyone in Michigan or the Mid-American Conference.

John Garland

• Department of Public Safety, 1963-94

When Garland started on the night watchman patrol in the 1960s, the five patrolmen shared one radio, one car and one gun. By the time he retired in 1994 as chief of the Department of Public Safety, Garland oversaw a fully functioning 21-member department.

R. Stanley Gex

Formerly the dean of Teacher Education, Gex was named the first dean of the College of Education, created when the school converted to University status. Gex then became dean of the new Center of International Studies in 1967, then professor of Curriculum and Instruction in 1972.

Ralph Gilden

"In his 40 years on campus Gilden went through offices and titles the way most people wear out shoes." That's what the press release said when Gilden retired on June 30, 1982.

Gilden directed admissions, student activities, student affairs, the Campus Interact Center, parent relations, school-college relations, the EMU Parents' Association, Alumni relations, and the EMU Cheerleading and Pom Pon Team.

During 1974 he served as interim president. He also taught in Industrial Education from 1942 to 1945. And Gilden was the first person in the school's history to be granted the title of emeritus dean.



Ellen Gold

• Director, University Health Services, 1986-present

Gold, a nationally-known expert in drug and alcohol issues on campus, has served as chair of the Alcohol, Tobacco and Other Drugs Task Force for the American College Health Association. She also is the center associate for the Higher Education Center for Alcohol and Other Drug Prevention, U.S. Department of Education. In 1998, she served as part of the U.S. Department of Education's planning committee for the annual national meeting on Alcohol, Other Drug and Violence Prevention in Higher Education.

Gary D. Hawks

Gary Hawks spent 17 years at the University, starting in 1964 as supervisor of Accounts Receivable, director of Personnel, executive director of University Relations and, from 1972-81, as vice president for University Relations. He also was secretary to the Board of Regents from 1970 until retiring in 1981.

Susan Burch Hill

• Dean of Women, 1939-63
• Dean of Students, 1963-69

Hill oversaw the transition from separate deans for men and women to one dean of students. She started as Dean of Women in 1939, the same year in which the first women's residence halls, King and Goodison, opened. Under Hill, the College assumed responsibility for the physical, social and cultural life of the students 24 hours a day. She retired in 1969.



In addition, she served two terms on the Ypsilanti City Council. The Hill Residence Hall named for her opened in 1969.

Robert Holkeboer

• Dean, Research and Graduate Studies, 1997-present

Holkeboer worked as a screenwriter and actor before joining Eastern Michigan University in 1971 as a professor of English Language and Literature. He was named director of the Honors program in 1984 and became interim dean in 1997. He has served as president of the Michigan Honors Association and has been honored with the Faculty Recognition and the Scholarly Achievement Awards. He is well-known for several published works, including "A Casebook for Student Leaders," a leadership training text; "Right From the Start: Managing Your College Career"; and "Creative Agony: Why Writers Suffer." He was interim dean from 1997 until receiving the permanent appointment in 1999.

Lydia I. Jones

• Dean of Women, 1924-1939

Upon the appointment of Lydia Jones as Dean of Women, Bessie L. Priddy, wrote, "(Jones) is womanly, sensible, gracious, cooperative, and respected." Priddy preceded Jones as Dean of Women.



Ann Cleary Kettles

• Registrar, 1991-96

Kettles started at EMU in 1972 as a secretary in the nursing department. She later became an academic adviser before moving into management positions in the advising office. She was named direc-



tor of Records, Registration and Advising in 1991, and retired after 23 years at the University in 1996. Throughout her career, Kettles helped implement many programs, including the Fast Track program for incoming students. She also helped develop the academic mentor program and the "Undeclared" Advising Fair. In her role as registrar, she worked closely on revising the registration system. Kettles' work in the community also earned her the 1990 Alexis de Tocqueville Society Award, created by the United Way to recognize people for outstanding service in their communities or on a national level.

Hildred Lewis

• Director, Upward Bound Project, 1971-99

Hildred Lewis was the guiding force behind EMU's Upward Bound Project for 28 years. The project, which was started by the U.S. Department of Health, Education and Welfare, helps high school students with their academic and social preparation for post-secondary education. "We have former students who now function as teachers, carpenters, dentists, and plumbers," Lewis said.

Lewis and Upward Bound have helped thousands of high school students go on to successful college careers. Lewis earned his bachelor's and masters degrees from EMU in 1967 and 1970, respectively.

While an undergraduate he was a co-captain for the football team and won eight varsity letters on the track team.

Bernice Lindke

• Director, Financial Aid, 1996-present

Lindke earned both her undergraduate and graduate degrees at EMU. She began her career at Eastern as associate director of Financial Aid, was interim director during 1994-95, and assumed the directorship in 1996.

George Linn

• Registrar, 1979-87

In addition to serving as director of Academic Records and Certification, a position he held from 1979 until retiring in 1987, George Linn also served as the faculty representative to the NCAA. He came to EMU in 1955.

Donald M. Loppnow

• Associate Vice President, Extended Learning, 1996-present

• Social Work Department Head, 1981-96

• Social Work Instructor, 1974-present

• Associate Director, Institute for the Study of Children, Families and Communities, 1979-81

• Interim Director, Research Development 1985-86

Loppnow joined EMU in 1974 as a lecturer in Social Work. By 1981, he was professor of Social Work and was appointed the first head of EMU's Depart-



ment of Social Work the same year. He also served as interim director of the Office of Research Development. Today, Loppnow assists in the overall formulation and delivery of new forms of learning, including the University's institutes and centers. He earned a bachelor's degree in Social Work and Psychology from the University of Wisconsin, a master's in Social Work at Washington University in St. Louis, Mo., and a doctorate in Higher Education Administration at the University of Michigan.

Lowe S. "Sandy" Maclean

• Associate Vice President, Student Affairs, 1976-81

Maclean came to Eastern as Dean of Students in 1970, and served in that capacity until being promoted in 1976. He was one of a handful of administrators to take advantage of an early retirement program. At the time of his retirement at age 47, he was responsible for the Career Services Center, Dean of Students office, Special Student Services, Campus Life, and the recreation and intramural programs.

A.P. Marshall



Marshall's professional career in Michigan included an appointment as director of EMU's library and dean of Academic Services, until his retirement in 1980.

Marshall, a well-known historian and storyteller in Ypsilanti, often

was the first African-American to serve in a given capacity. Among the books he has written: "Unconquered Souls: The History of the African American in Ypsilanti," and "The Legendary 4 Horsemen of the African Methodist Episcopal Church."

Everett Marshall

- Education and Psychology faculty, 1938-49
- Dean of Academic Records and Teacher Certification, 1949-79

Marshall was the school's second registrar, succeeding C.P. Steimle in 1949. During Marshall's term, his office certified more than 30,000 teachers. When he started as a teacher, enrollment was 1,850. Forty-one years later, as Marshall retired, enrollment neared 19,000.

Marshall and his wife Helen were known for their compassion for students, which extended to hosting international students at their home during the holidays.

In 1994, Marshall donated \$100,000 to the College of Health and Human Services. He started the Everett L. Marshall Scholarship Fund during his tenure and was known as an advocate for students, creating methods for students to improve their grade point average and to graduate in a timely manner. Marshall also supported EMU's Town Hall Schoolhouse and Forensics.

Grace Maxfield

- Librarian, 1970-90

During her 20 years working in the EMU library, perhaps Grace Maxfield's largest project involved changing the call numbers in all the books — which at the time was 170,000 — from the Dewey classification system to the Library of Congress classification system. The project took four years.

When she retired, though, Maxfield said the most dramatic change during her career was the introduction of computer terminals in 1988. "I seem to have survived, however I do wonder what catalog-



ing will be like in the years to come," she said in 1990.

Courtney O. McAnuff

- Vice President, Enrollment Services, 1996-present
- Associate Vice President for University Marketing and Student Affairs, 1992-96
- Assistant Vice President for University Marketing and Student Affairs, 1990-92
- Dean of Admissions and Financial Aid, 1986-90
- Director of Admissions and Financial Aid, 1984-86
- Director of Financial Aid, 1980-84

McAnuff is a nationally recognized leader in student financial aid management, and was responsible for the streamlining and modernization of Admissions and Financial Aid.

Glenna Frank Miller

- Director, McKenny Union and Campus Life, 1997-present

Glenna Frank Miller has extensive experience at Eastern Michigan University. She worked in housing from 1974 through 1983, when she was promoted to director of Campus Life. The Eastern

Michigan University Women's Association cited her, in 1990, for her efforts to create student awareness about a variety of women's issues.

Allen Myers

- Dean, College of Education, 1967-75

Myers was head of the Special Education Department when he was named the second dean of the College of Education in 1967.



Bruce K. Nelson

- Vice President for Instruction, 1956-75

For more than 20 years Nelson played the major role in shaping the academic structure of the University and helped facilitate the creation of the College of Education. Following James Brickley's appointment as President, Nelson returned to his professorship in the Department of Educational Leadership. He retired in 1981.



John D. Pierce

- State Superintendent of Public Instruction, 1836-41

Pierce's role in Michigan State Normal transcends the school itself. When Michigan's new constitution was framed in 1850, Pierce secured the inclusion of free public schools, thus earning himself the title of "Father" of the Michigan school system. He became the first superintendent of Public Instruction.

In 1852, Pierce moved to Ypsilanti, where he remained for 30 years, devoting much time to his ministry. He spoke on "A perfect school system" at the dedication of Normal's first building in 1852.

Upon Pierce's death in 1894, the Normal News wrote, "Few persons are born to reach an eminence which distinguishes them above the ordinary mass of workers; but as long as Michigan shall stand, the name of Hon. John Davis Pierce will be remembered, and the influence of his works will continue to be felt."

Janet Pichette

- Vice President for Business and Finance, 1988-92

Pichette left EMU in 1992 to become vice president for business and administration at Ohio State University.

Bessie Leach Priddy

- Dean of Women, 1918-23

"Unquestionably the position of dean of women, in an institution enrolling 1800 girls, and where there are no dormitories, is in many respects the most difficult one on the campus," President Charles McKenny wrote in the Normal News upon Priddy's resignation in 1923.

In 1921 the senior class dedicated its yearbook to Priddy, with the following inscription: "To Bessie Leach Priddy, Dean of Women and Mother to us all, this volume is lovingly dedicated. Miss Priddy once dismissed a young lady from school for having two cigarette butts in her trashbasket."

Lewis E. Profit

- Various positions, 1954-60
- Controller, 1960-64
- Vice President and Controller, 1964-74

Profit resigned as vice president for Business and Finance in 1974, joining the College of Business as professor and special assistant to the dean. When Profit stepped down as vice president in 1974, President Sponberg called him one of the top fiscal officers in the state.

Juanita M. Reid

- Vice President, University Relations, 1996-present

After nearly 20 years at the University in various capacities, Reid was named vice president of the new University Relations Division on Jan. 1, 1996. The new division came about after a reorganization prompted by the departure of Roy Wilbanks, as well as the creation of a Division of Enrollment Services.

Bryan Roberts

- ROTC Battalion Commander, 1982-83

Roberts was the first black battalion commander in the ROTC department on campus. A former running back for Eastern's football team, Roberts also helped found the NAACP organization on campus.

Abigail Rogers

- Preceptress of Women, 1853-55

The first Preceptress of Women, Rogers left Normal to found the Michigan Female College in Lansing. The Lansing Republican said, "She was the acknowledged and leading champion of the higher education of women in Michigan." She died in 1869.

Robert Romkema

- Vice President for Business and Finance, 1976-87

Romkema joined the University in 1975 and headed the Business and Finance Division from 1976 until he retired in 1987.

Earl A. Roth

- Head, Department of Business Studies, 1961-64
- Dean, College of Business, 1964-70

Roth was a professor in the Department of Business Studies from 1954-61. He was the first dean of the College of Business. He also served as acting dean of the Graduate School in the early 1970s.

Alvin E. Rudisill

- Dean, College of Technology

The first dean of the College of Technology was appointed in 1980. He also established the Coatings Research Institute, and the Corporate Services Center, where he served as the first director.

William Smart

- Director, Physical Plant, 1966-present



Smart earned both his undergraduate and graduate degrees at EMU. He began his career at the University as a unit manager in food service, and held various positions that led to his current role as

head of the Physical Plant. In 1980, Smart accepted, on behalf of the University, the Governor's first Energy Management Award for the most successful total energy management program at a state institution.

Laurence N. Smith

- Vice President, University Marketing and Student Affairs, 1975-present

Smith has overall leadership responsibility for strategic University marketing, communications and student affairs. His personal and professional philosophy that, "people support what they help to create," and that "the test of our effectiveness is the positive difference we make in the life of an individual student," underpinned the workings of his division and were ultimately incorporated throughout the entire campus community.

In recognition of his lifetime achievements, Smith in March 1999 was named a "Pillar of the Profession" by the National Association of Student Personnel Administrators Foundation.

Also in 1999, Smith announced his retirement from the University, effective June 30, 2000.

Glenadine C. Snow

- Director of Health Service, 1917-47

In 1915 a house on Perrin Street behind Pease Auditorium was acquired and equipped as a "Health Cottage." "Student doctors" from the University of Michigan staffed it, and among them was Glenadine Snow. A hospital building, planned by Snow, was built in 1939, and considered a model hospital for colleges. That building was given to the Music Department, and the new Snow Health Center was built in 1959. In addition to a new counseling center, the new Snow Health Center housed EMU Information Services and a child care center.

Dorian Sprandel

- Associate Vice President, University Marketing and Student Affairs, 1990-92

Sprandel had worked at the University for 24 years before he took leave in October 1991 because of an inoperable brain tumor. He died in March 1993. He served as director of Housing, Food Services and Auxiliary Services, and executive director in University Marketing before being named associate vice president in 1990.

Clemens P. Steimle

- Registrar, 1909-49

The retirement in 1949 of the Normal College's first registrar prompted the Normal College News to devote its entire front page to the news. Dean of Administration Egbert R. Isbell called Steimle "a veritable symbol of the college as it has been known during the past forty years."

The president of Kappa Delta Pi honorary society said of Steimle's retirement, "C.P. Steimle is the world's worst pretender for he would have people believe he is going to retire to a life of leisure. ...He will still be more active on this campus than many of the people who will still be here."

The Steimles were active in Ypsilanti affairs as well. They lived in the Bertha Goodison residence, a white brick structure at 317 S. Huron St.

Steimle spent almost his entire adult life at the Normal. He graduated from the school in 1902, and was captain of the basketball team, which was coached by Professor Wilber Bowen.

The University Archives in the Halle Library contains the roltop desk that Steimle used throughout his career.

John W. Stevens

- Superintendent of Buildings and Grounds, 1897-1937

Stevens worked at Eastern Michigan from 1897 to 1945, serving as head of Buildings and Grounds

for most of those years. The former Physical Plant building, torn down to make way for the Halle Library, was named for him.

William Swihart

- Director of Purchasing, 1964-87

Swihart had 30 days to create a purchasing department, which he then managed for the 23 years. When he retired in 1987, the department was processing approximately 11,000 purchase orders and 22,000 requisitions annually — all without the aid of computers.

Swihart was raised in Ypsilanti, and attended elementary school in what is now Welch Hall. He completed 12th grade in Roosevelt School, which is now Roosevelt Hall.

Judy Benfield Tatum

- Director, Admissions Office, 1995-present
- Director, Financial Aid, 1986-95
- Associate Director, Financial Aid, 1978-86



In her role as director of Admissions, Judy Tatum administers undergraduate admissions and marketing the University to prospective students. Thanks to the efforts of the Admissions Office and the Division of Enrollment Services, in May 1999, EMU prepared for the largest freshman class in the University's 150-year history. This class included 50 valedictorians and salutatorians. The University also partnered with four local school districts to create a dual enrollment program, called the Eastern Scholars Program, to help select students in the Milan, Lincoln Consolidated, Willow Run and Ypsilanti high schools to get a head start on their college careers while still in high school.

Arthur J. Timko

- Director, WEMU, 1981-present
- WEMU Program Director, 1973-81
- WEMU Producer/Director, 1971-73

Arthur J. Timko is a 25-year veteran of Eastern Michigan University. Under his leadership, WEMU won several Associated Press News Awards for local programming, and its audience increased from 5,000 listeners to 50,000. In 1992, the geographical coverage increased to include western Wayne, northern Livingston and Lenawee counties.

The station also has become extensively involved with community activities, including the Detroit Montreux Jazz Festival, the Ypsilanti Heritage Festival, the Ann Arbor Art Fairs and the Ann Arbor Blues and Jazz Festival. Over the years, Timko has served on the Board of Directors of the Michigan Corporation for Public Broadcasting and is currently serving his third term as president of the Michigan Public Radio Network.

Kathleen Tinney

- Assistant Vice President, University Relations, 1990-present

A 31-year-veteran of Eastern Michigan University, Tinney started at Eastern Michigan in 1968 as assistant publications editor. She has also worked as news editor; director of Public Information and University Publications; and was appointed director of University Communications in 1987. She is a former member and chair of the Women's Commission, and served on the Hayes Study Advisory Council, which established the job classification system for University employees.

James F. Vick

- Assistant Vice President, University Marketing and Student Affairs, 1992-present

A 26-year veteran at Eastern Michigan, Jim Vick currently serves as assistant vice president, University Marketing and Student Affairs. In his role as as-



stant vice president, he is responsible for Housing and Dining Services, University Health Services, the Recreational/Intramural Department, Career Services, Technology Services, McKenny Union/Campus Life and financial operations. He began at Eastern in 1973 as a Resident Unit Administrator, and also held management positions in University Apartments, University Stores, Purchasing, Career Services, and Housing and Food Service.

Genevieve M. Walton

- Librarian, 1892-1932

"The modern era of the Normal library may be said to have begun with the coming of Genevieve M. Walton in 1892," Egbert R. Isbell wrote. She served for 40 years, and helped secure the first separate library building, which opened in 1930.

During winter weather, she sometimes would fix a large pot of coffee at home, then take it to campus and serve it to students in the library.

Genevieve Walton co-founded the Michigan Library Association, and became its first woman president. In 1926, she wrote a "History of Michigan Libraries" for the association's 50th anniversary.

The residence hall named for her was built in 1968.

W. Scott Westerman Jr.

- Dean, College of Education, 1980-1991

Westerman managed to have a diverse career while staying within eight miles of EMU. After graduating from the University of Michigan, he worked there before joining the Ann Arbor Public Schools, serving for four years as superintendent.

He came to EMU as head of the Curriculum and



Bette White in 1996.

Instruction Department in 1971, and in 1980 became dean of the College of Education, a position he held until retiring in 1991. EMU's first doctoral program, in Educational Leadership, was instituted during Westerman's tenure as dean. Westerman also has written extensively about the history of the college.

Bette White

- Associate Dean of Students, 1970-76
- Dean of Students, 1976-96

As adjudicator of the Student Conduct Code, White said upon her retirement as Dean of Students in 1996, "I hope to be thought of as having been fair."

White touched the lives of countless students, faculty and staff through her professional efforts and personal outreach. White became the first non-faculty member of the University granted emeritus status.

Roy Wilbanks

Wilbanks' extensive involvement with EMU started in 1983, as assistant to the president for governmental and community relations, and secretary to the Board of Regents. He was named vice president for University Relations in 1985. Later appointed executive vice president, he retired in 1995 to run the EMU Foundation. In September 1998, while maintaining his position at the Foundation, Wilbanks was named a special adviser to the president for Intercollegiate Athletics.

Robert Zumwinkle

- Vice President for Student Affairs, 1968-70

Zumwinkle's appointment warranted an extra edition of the Eastern Echo on Thursday, Feb. 22, 1968. Eastern Echo Editor Claire David accurately predicted, "Student demonstrations is one particular problem area that could confront Zumwinkle in his new role."